



Custom Dynamics® TruWRAPZ® Installation Instructions

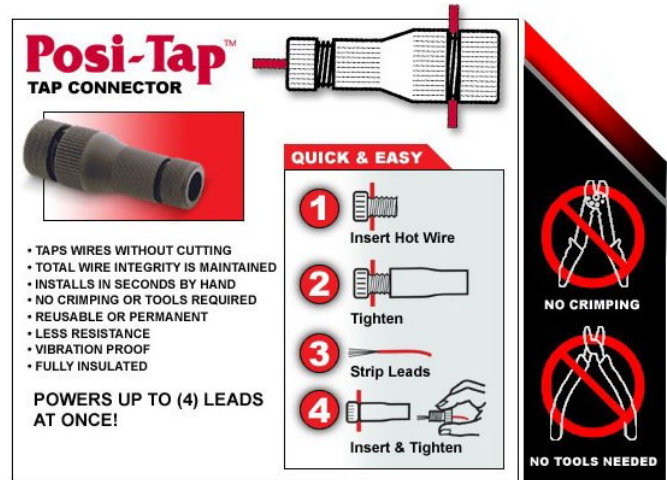
We thank you for purchasing Custom Dynamics® TruWRAPZ® LED directional lighting! Our products utilize the latest technology and high quality components to ensure you the brightest, most reliable LED's on the market. We offer one of the best warranty programs in the industry and we back our products with excellent customer support, if you have questions before or during installation of this product please call Custom Dynamics® at 1(800) 382-1388.

Package Contents:

- TruWRAPZ® (pair)
- EPZ2 Eclipse2® Module (pair)
- Black #205 Heat Shrink Tubing (2)
- 3M Promoter Pack (1)
- Chrome Zip Ties (10)
- SSWL Stainless Steel Wire Loom (6')
- Wire Loom grey shrink Tubing (2)
- Posi-Taps (6)

Installation Instructions:

1. Select location to mount TruWRAPZ®. A good location is under triple trees.
2. Test fit TruWRAPZ® on desired fork location.
3. Clean both fork tubes where TruWRAPZ® will be mounted with supplied 3M primer. Allow to dry for 3-5 minutes.
4. Do not remove red 3M liner at this point in time. Wrap first TruWRAPZ® around fork, be sure excess red 3M Liner hangs down so that you can easily access it.
5. Insert chrome zip tie end through locking hole and pull tight locking TruWRAPZ® in place.
6. Take loose end of 3M liner and slowly pull to remove liner and expose tape to fork. Give zip tie a final pull to lock 3M tape to fork. Cut off Excess zip tie.
7. Repeat steps 4-6 for remaining TruWRAPZ®.
8. If Connecting Eclipse2® Module to make TruWRAPZ® running lights and turn signals, follow instructions included with Eclipse module, use enclosed black heat sink to make connections from TruWRAPZ® to Eclipse2® Module.
9. Route wires from TruWRAPZ® to stock turn signal wiring, be sure to leave the proper slack to allow handlebars to fully turn in each direction. Cut off excess wires.
10. Open stainless steel wire braid with dull object, the ball end of a motorcycle antenna works great. Cut stainless steel wire braid to proper length for left and right wires.
11. Insert left and right wires into stainless steel wire braid. Slide a piece of gray heat shrink over each stainless steel wire braid and continue down until it reaches the TruWRAPZ®. Leave about 1/4" gap between stainless steel wire braid and TruWRAPZ® use gray heat shrink to bridge the gap and hold stainless steel wire loom in place. Heat gray heat shrink with heat gun or hair dryer until it shrinks into place.
12. Using enclosed Posi-Taps, make connections to stock turn signal wires. If using Eclipse2® : Orange—Running, Red—Turn, Black—Ground. If you are not using Eclipse2® : Yellow—Turn, Black—Ground.
13. Using enclosed tie wraps, tie up any loose wires.
14. Check operation of both TruWRAPZ® in running and turn signal modes.



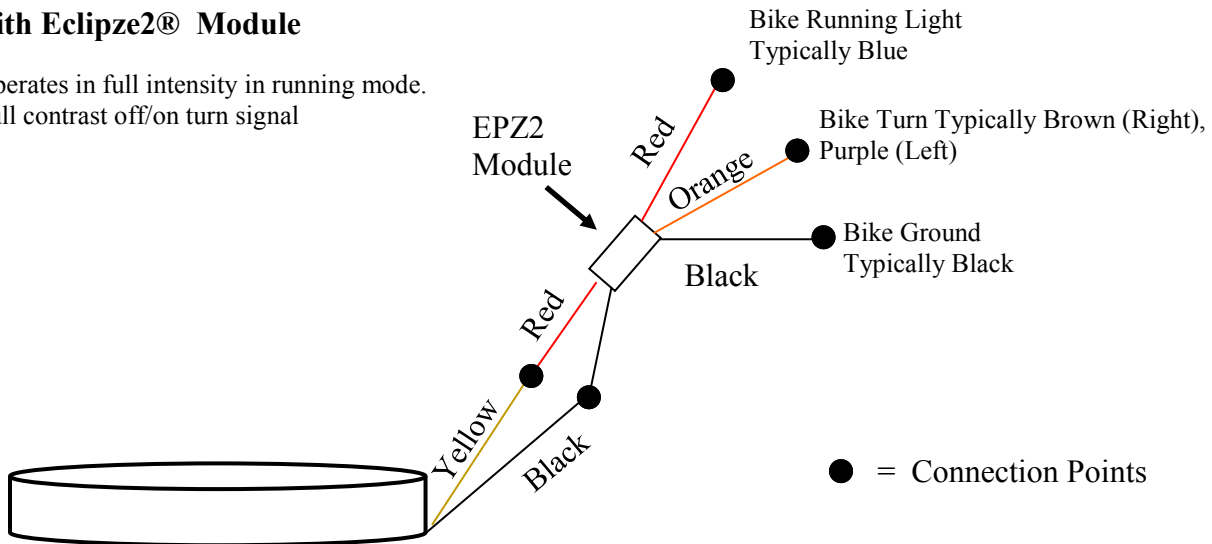
Note: If you are using the TruWRAPZ® as your primary front signal lights and removing the stock turn signals, you may experience a fast flash as if a bulb is out. If this occurs, a load equalizer or our Slim Line Signal Stabilizer is recommended. Contact us for details.



TruWrapz® Wiring Diagram

With Eclipse2® Module

- Operates in full intensity in running mode.
- Full contrast off/on turn signal



With TruFLEX® Dual Converter (Optional)

- Purchased Separately
- Operates as standard low/high intensity

