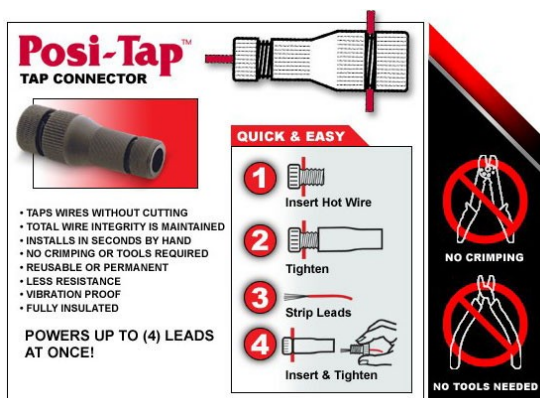


# Custom Dynamics® TruWRAPZ™ Installation Instructions

- 1) Select location to mount TruWRAPZ™. A good location is under triple trees.
- 2) Test fit TruWRAPZ™ on desired fork location. Hold TruWRAPZ™ in place and mark excess tube location with a Sharpie.
- 3) Remove TruWRAPZ™ from fork and cut off excess tube such that TruWRAPZ™ will fit perfectly around fork and tube connector will fit into open end of TruWRAPZ™. If you trim off too much you cannot go back, it is better to trim off too little and then make a second trim if necessary. TruWRAPZ™ tube can be cut with scissors or other similar cutting tool.
- 4) Repeat process for second piece of TruWRAPZ™. Test fit both pieces of TruWRAPZ™ so that it wraps around fork and tube connector fits into open end of tube.
- 5) Clean both fork tubes where TruWRAPZ™ will be mounted with supplied 3M primer. Allow to dry for 3-5 minutes.
- 6) Do not remove red 3M liner at this point in time. Wrap first TruWRAPZ™ around fork, be sure excess red 3M Liner hangs down so that you can easily access it. Place 1 full drop of EZ Bond Glue on connector and insert connector into open end of tube. Hold for 3-5 minutes until glue dries. Only perform this step if temperature is 70 degrees F or above.
- 7) Start to pull Red 3M liner off while pushing TruWRAPZ™ against fork tube, continue around until all liner is removed.
- 8) Repeat steps 6-7 for remaining TruWRAPZ™.
- 9) Be sure tube connector is fully sealed and watertight.
- 10) If Connecting Eclipse™ Module to make TruWRAPZ™ running lights and turn signals, follow instructions included with Eclipse module, use enclosed heat sink to make connections from TruWRAPZ™ to Eclipse™ Module.
- 11) Route wires from TruWRAPZ™ to stock turn signal wiring, be sure to leave the proper slack to allow handlebars to fully turn in each direction. Cut off excess wires.
- 12) Open stainless steel wire braid with dull object, the ball end of a motorcycle antenna works great. Cut stainless steel wire braid to proper length for left and right wires.
- 13) Insert left and right wires into stainless steel wire braid. Slide a piece of gray heat shrink over each stainless steel wire braid and continue down until it reaches the TruWRAPZ™. Leave about 1/4" gap between stainless steel wire braid and TruWRAPZ™ use gray heat shrink to bring the gap and hold stainless steel wire loom in place. Heat gray heat shrink with heat gun or hair dryer until it shrinks in place.
- 14) Using enclosed Posi-Taps, make connections to stock turn signal wires. If using Eclipse: Orange—Running, Red-Turn, Black-Ground. If you are not using Eclipse: Yellow-Turn, Black-Ground.



- 15) Using enclosed tie wraps, tie up any loose wires.
- 16) Check operation of both TruWRAPZ™ in running and turn signal modes.