



## Custom Dynamics® Dynamic A/W Engine Guard LEDs Installation Instructions

We thank you for purchasing the Custom Dynamics® Dynamic A/W Engine Guard LEDs. Our products utilize the latest technology and high quality components to ensure you the most reliable service. We offer one of the best warranty programs in the industry and we back our products with excellent customer support, if you have questions before or during installation of this product please call Custom Dynamics® at 1(800) 382-1388.

**Part Numbers:** CD-CB-AW-UNV-B  
CD-CB-AW-UNV-C

### Package Contents:

- Dynamic A/W Engine Guard LEDs (pair)
- UNV Adapter Harness (1)
- 9" Black Wire Tie Wrap (10)
- 6" Chrome Wire Tie Wrap (10)
- Foam Mounting Pad (4)
- Hex Wrench (1)



**Fits:** 1.25" engine guards, 12VDC negative ground systems. Requires 5" of straight (not curved) mounting area. Lights are not compatible with Harley-Davidson OEM 49000138 or 49000139 Engine Guard Kit for 18-current Softail models.

### Installation:

1. Disconnect the negative battery cable from the battery.
2. Determine your desired mounting location. Using the provided Foam Mounting Pads, remove backing and apply the Foam Mounting Pads to the front and back of the engine guard at the mounting location.
3. Disassemble the Dynamic A/W Engine Guard LEDs and mount to the engine guard. Place the back side of the housing on the engine guard. Using the supplied hardware, secure the front housing to the back housing. **NOTE:** The wiring harness must lay in the notch of the front Dynamic A/W Engine Guard LED housing to prevent it from being pinched or damaged during installation.
4. Route the wiring harness from each Dynamic A/W Engine Guard LEDs to the point of termination. Make sure wiring does not come in contact with any moving or high heat parts.
5. Install the provided JAE connectors onto the pre-pinned wires from each Dynamic A/W Engine Guard by pushing the pins into the connector ports according to Photo 1 on page 2 (locking tab oriented at top of JAE connector). Pins should snap in place and not pull back out of connector when installed correctly.
6. Connect the UNV Adapter Harnesses to each engine guard LED harness.
7. Using the attached Posi-Tap connectors, connect the UNV Adapter Harness to vehicle lighting circuits, see Wiring Diagram below.
8. Using the provided wire ties, secure the Dynamic A/W Engine Guard harness to prevent damage.
9. Reconnect the negative battery cable to the battery and reinstall the seat.
10. Test operation of all lighting for proper running, brake and turn before riding.

## ⚠ ATTENTION ⚠

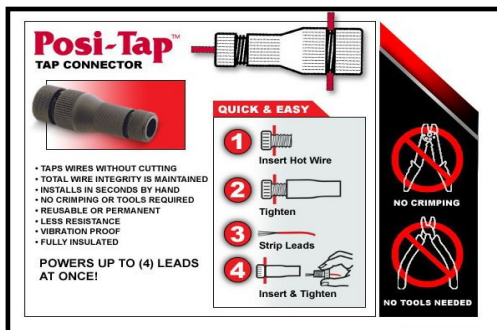
Please read all Information below before Installation

**Warning:** Disconnect negative battery cable from battery; refer to owner's manual. Failure to do so may result in electrical shock, injury, or fire. Secure negative battery cable away from positive side of battery and all other positive voltage sources on vehicle.

**Safety First:** Always wear appropriate safety gear including safety glasses when performing any electrical work. It is highly recommended that safety glasses be worn throughout this installation process. Be sure vehicle is on level surface, secure and cool.

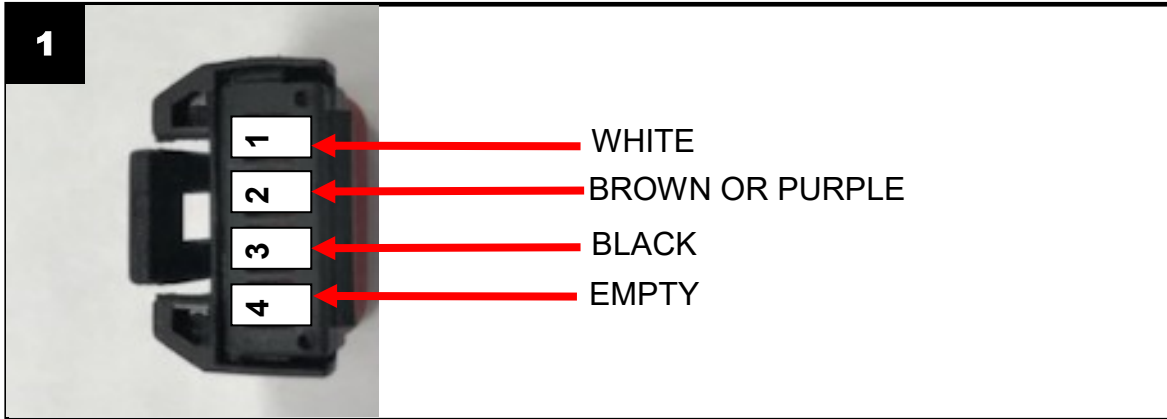
**Important:** This product is designed and intended for use as auxiliary lighting only. It is NOT intended to replace any original equipment lighting installed on the vehicle and should not be used for that purpose. This product must be wired so that it does not interfere with any original equipment lighting.

**Warning:** Drilling the engine guard and running the wires internally in the engine guard is **NOT** recommended as it weakens the integrity of the engine guard.



**Questions? Call us at: 1 (800) 382-1388 M-TH 8:30AM-5:30PM / FR 9:30AM-5:30PM EST**

## Installation Instructions - Page 2.



**Port 1 = White**

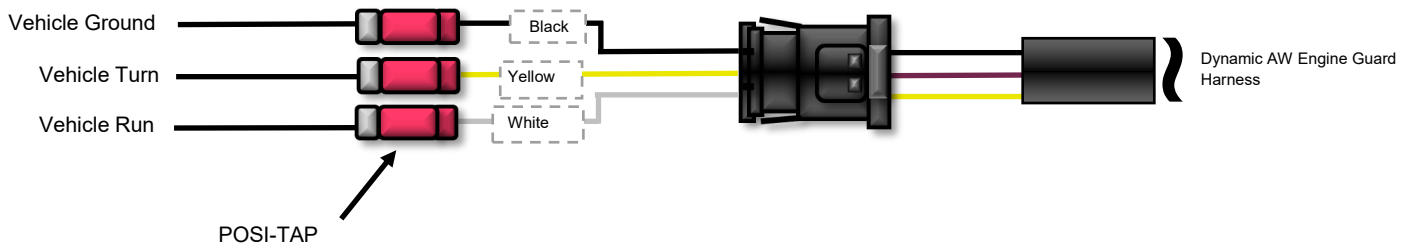
**Port 2 = Brown or Purple**

**Port 3 = Black**

**Port 4 = Empty**

### Wiring Diagram

UNV Adapter Harness



Questions? Call us at: 1 (800) 382-1388 M-TH 8:30AM-5:30PM / FR 9:30AM-5:30PM EST