



Custom Dynamics® CVO Tag Illumination Top Installation Instructions

We thank you for purchasing the Custom Dynamics® CVO Tag illumination Top. Our products utilize the latest technology and high quality components to ensure you the most reliable service. We offer one of the best warranty programs in the industry and we back our products with excellent customer support, if you have questions before or during installation of this product please call Custom Dynamics® at 1(800) 382-1388.

Part Numbers: CD-CVO-LEDTOP-B
CD-CVO-LEDTOP-C

Package Contents:

- CVO Tag Illumination Top (1)

Fits: Compatible with CD-CVO-MOUNT-B or CD-CVO-MOUNT-C (sold separately) on 2014-2021 Harley-Davidson® Street Glide CVO™ (FLHXSE), 2018-2021 Road Glide CVO™ (FLTRXSE) and 2014 Road King CVO™ (FLHRSE).



ATTENTION

Please read all Information below before Installation

Warning: Disconnect negative battery cable from battery; refer to owner's manual. Failure to do so may result in electrical shock, injury, or fire. Secure negative battery cable away from positive side of battery and all other positive voltage sources on vehicle.

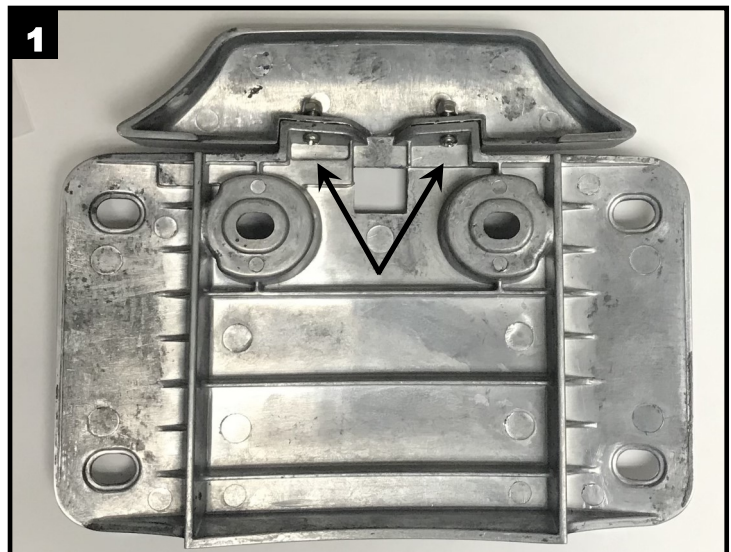
Safety First: Always wear appropriate safety gear including safety glasses when performing any electrical work. It is highly recommended that safety glasses be worn throughout this installation process. Be sure vehicle is on level surface, secure and cool.

Important: This product is designed and intended for use as auxiliary lighting only. It is NOT intended to replace any original equipment lighting installed on the vehicle and should not be used for that purpose. This product must be wired so that it does not interfere with any original equipment lighting.



Installation:

1. If the CD-CVO-MOUNT (Sold Separately) is already installed on the motorcycle, it must be removed for the CVO Tag illumination Top to be installed.
2. Remove the 2 Top Trim mounting bolts from the CD-CVO-MOUNT (Sold Separately). Refer to Photo 1.
3. With the bolts removed, install the Tag Illumination Top on the CD-CVO-MOUNT (Sold Separately) using the bolts removed in Step 2.
4. If installed, Remove the license plate from the OEM plate frame mount.
5. Locate the license plate illumination connector cover located on the underside of the rear fender. Refer to Photo 2.



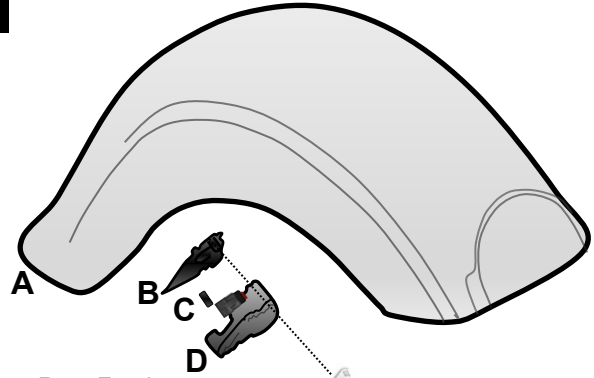
Questions? Call us at: 1 (800) 382-1388 M-TH 8:30AM-5:30PM / FR 9:30AM-5:30PM EST

Installation Instructions - Page 2.

Installation:

6. Remove the nut securing the connector cover to the fender. With the nut removed, pull the cover off of the stud and slide the cover up to remove. Refer to Photo 2.
7. If connected, disconnect the 2 pin license plate illumination connector from the existing tag light.
8. If installed, Remove the OEM plate frame mount from the fender by removing the two mounting bolts. Refer to Photo 3.
9. Install the rubber gasket on the back of the CD-CVO-MOUNT (Sold Separately).
10. Lay the CD-CVO-MOUNT (Sold Separately), with the Rubber Gasket installed, onto the fender. The 2 pin connector from the CVO Tag Illumination Top will need to be fed through the hole in the fender. Align the mounting holes on the CVO Mounting plate with the holes in the fender.
11. Using the 2 provided mounting bolts that came with the CD-CVO-MOUNT (Sold Separately), secure the CD-CVO-MOUNT (Sold Separately) to the rear fender.
12. Connect the 2 pin connector from the LED Top Trim to the license plate illumination connector on the under side of the fender.
13. Reinstall the connector cover on under side of the rear fender using the existing nut.
14. Gently radius your license plate to match the radius of the CVO Mounting Plate.
15. Using the provided bolts and threaded bolt plates that came with the CD-CVO-MOUNT (Sold Separately), mount your license plate to the CD-CVO-MOUNT (Sold Separately) .
16. Test all lighting for proper operation.

2



- A — Rear Fender
B — Inner Fender Mounting Plate
C — 2 Pin Connector
D — Connector Cover
E — Nut

3

