



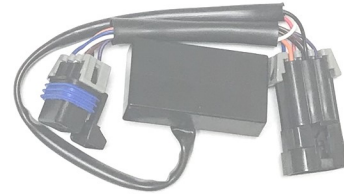
Custom Dynamics® Magic Strobes™ Brake Flasher Installation Instructions

We thank you for purchasing the Custom Dynamics® Magic Strobes™ Brake Light Flasher! Our products utilize the latest technology and high quality components to ensure you the most reliable service. We offer one of the best warranty programs in the industry and we back our products with excellent customer support, if you have questions before or during installation of this product please call Custom Dynamics® at 1(800) 382-1388.

Part Numbers: MAGIC-STROBE-ISN
MAGIC-STROBE-ISP

Package Contents:

- Magic Strobes™ Brake Flasher (1)



MAGIC-STROBES-ISN

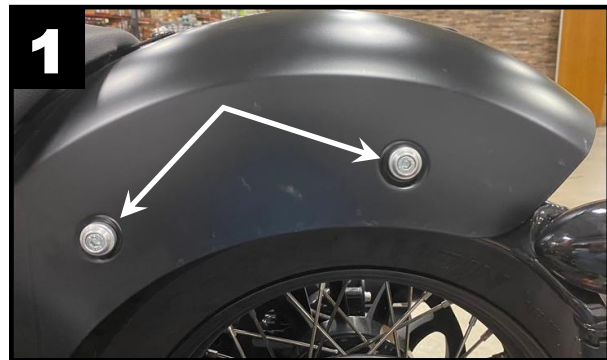
NORTH AMERICA (US, CANADA & MEXICO) MODEL NORTH AMERICA (US, CANADA & MEXICO) MODEL 2019-2023 Indian® Chieftain, Chieftain Limited, Chieftain Dark Horse, Chieftain Elite & Roadmaster Dark Horse, 2021-2023 Roadmaster Limited, 2021 Indian Vintage Dark Horse, 2020 Indian Chief Dark Horse and 2020-2023 Springfield Dark Horse. Does not fit International Models.

MAGIC-STROBES-ISP

NORTH AMERICA (US, CANADA & MEXICO) MODEL 2020-2023 Indian® Challenger, Challenger Dark Horse, Challenger Limited & Challenger Elite, 2022-2023 Indian Pursuit Limited & Pursuit Dark Horse, 2022-2023 Chief, Chief Dark Horse, Chief Bobber, Chief Bobber Dark Horse, Super Chief & Super Chief Limited models. Does not fit International Models.

Installation:

1. Secure motorcycle on level surface and remove the seat.
2. On Chief models, remove the 4 rear fender panel mounting bolts and remove the rear fender panel. Refer to Photo 1.



3. Disconnect negative [-] battery cable from the battery.
4. Locate and unplug the rear lighting connector to the rear fender under the seat. For all models except Chief models, the rear lighting connector is located on the right side near the rear fender. Refer to Photo 2. For Chief models, refer to Photo 3.
5. Plug the Magic Strobes™ module, in-line, into the rear lighting harness plug and the bike's main wiring harness plug.
6. Re-connect the battery's negative battery cable to the negative [-] of the battery.
7. Select Desired Pattern on the dial with power Off. (See Page 2 for Pattern Information)
8. Check Operation by pressing the brake and confirming the brake strobe pattern.
9. To change pattern, turn bike OFF and change dial to desired pattern.
10. Locate a secure place for the Magic Strobes™ unit that will not interfere with the secure placement of the seat. Secure the Magic Strobes™ unit so that unit will not move.
11. Reinstall seat and rear fender panel if removed.



ATTENTION



Please read all Information below before Installation

Important: Module must be secured after installation. Find safe area away from any moving parts and out of the way of normal operation of the bike. Use the enclosed tie-wraps to secure. Custom Dynamics® is not liable for damage as a result of improperly securing or failing to secure the module.

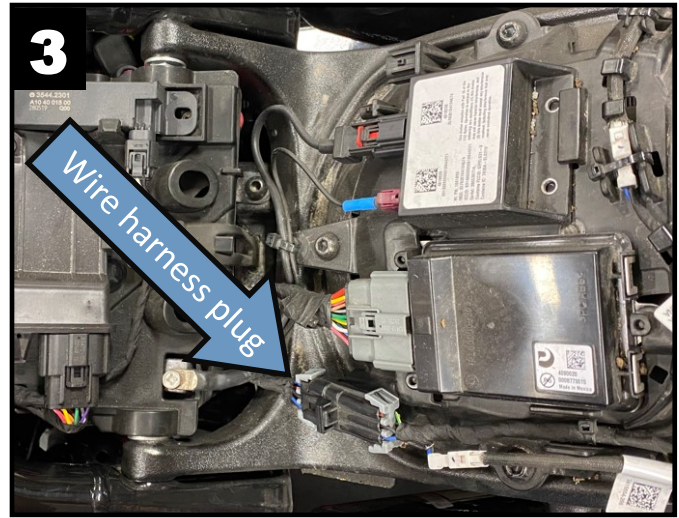
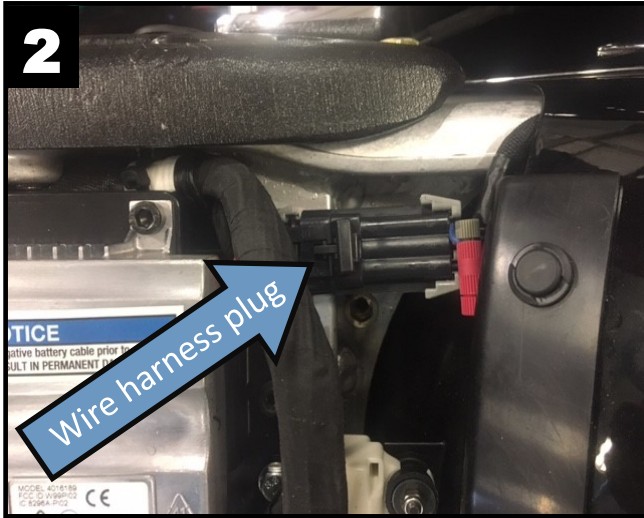
Important: Dial should be maneuvered by hand only. Do not use any tool such as a screwdriver that could damage waterproof cover

Caution: A stuck brake switch may cause this unit to overheat and fail. Unplug module immediately if this condition occurs.

Note: Although this device has been designed to significantly increase your braking visibility, flash/strobe patterns may not be street legal in your area.

Questions? Call us at: 1 (800) 382-1388 M-TH 8:30AM-5:30PM / FR 9:30AM-5:30PM EST

Installation Instructions - Page 2



Flash Pattern Information

Pattern 5: Quad Strobe, Solid for 1 Second, then Quad Strobe, Solid for 3 Seconds, then Repeat

Pattern 4: Quad Strobe then Solid for 1 Second then Quad Strobe

Pattern 6: Blaster X Pattern for 3 seconds, then Solid

Pattern 3: Seven Flashes, Solid for 3 Seconds, Repeat

Pattern 7: Constant Blaster X Pattern

Pattern 2: Seven Flashes then Solid

Pattern 8: Constant Fast Strobe 5 Seconds, then Solid

Pattern 1: Four Flashes, Solid for 3 Seconds, Repeat

Pattern 9: No Pattern

Pattern 0: Four Flashes then Solid

