



## Custom Dynamics® Low Rider Headlight Adapter Bracket Kit Installation Instructions

We thank you for purchasing the Custom Dynamics® Low Rider Headlight Adapter Bracket Kit. Our products utilize the latest technology and high quality components to ensure you the most reliable service. We offer one of the best warranty programs in the industry and we back our products with excellent customer support, if you have questions before or during installation of this product please call Custom Dynamics® at 1(800) 382-1388.

**Part Numbers:** CD-LRST-HL-KIT

### Package Contents:

- ProBEAM Headlight Adapter Bracket (1)
- Headlight Adapter Harness (1)
- 1/4-20 Nylon Jam Nut (4)
- Instructions (1)

**Fits:** 2022-2024 Harley-Davidson® Softail Low Rider ST (FXLRST), 2022 Low Rider El Diablo (FXRST), 2020-2024 Low Rider S (FXLRS).

**Note:** Compatible with ProBEAM® 5.75" Headlamps (PN 2001-1749 or 2001-1750) only, sold separately.

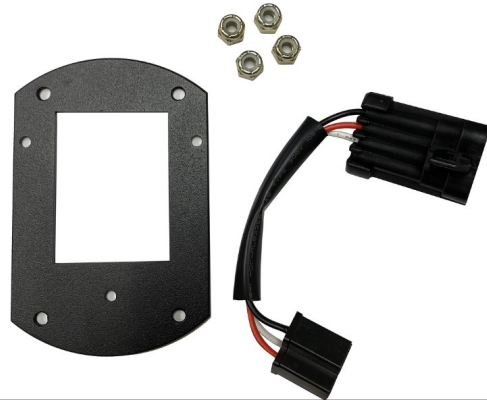


# ATTENTION

Please read all Information below before Installation

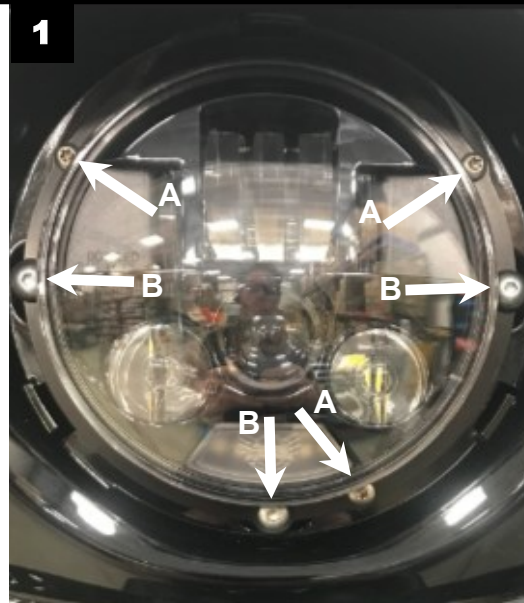
**Warning:** Disconnect negative battery cable from battery; refer to owner's manual. Failure to do so may result in electrical shock, injury, or fire. Secure negative battery cable away from positive side of battery and all other positive voltage sources on vehicle.

**Safety First:** Always wear appropriate safety gear including safety glasses when performing any electrical work. It is highly recommended that safety glasses be worn throughout this installation process. Be sure vehicle is on level surface, secure and cool.



### LRST Installation:

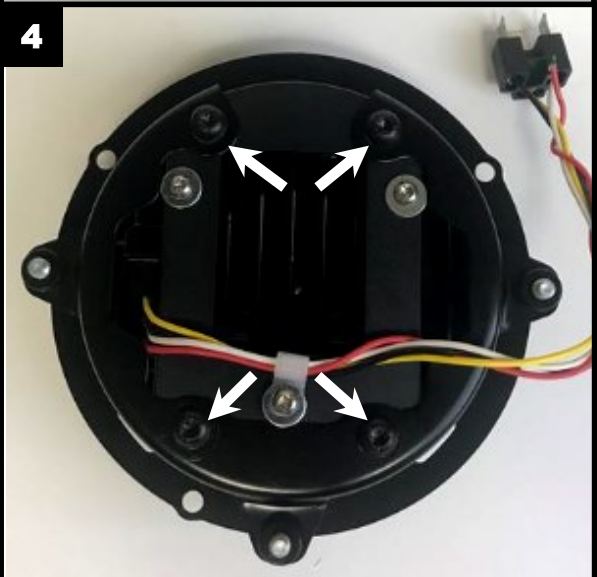
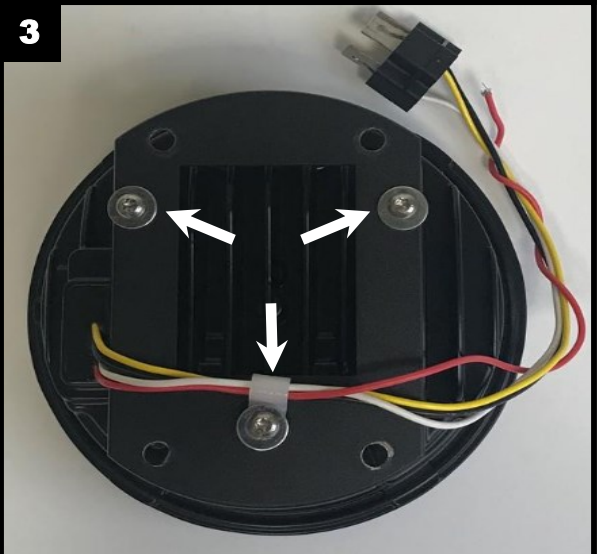
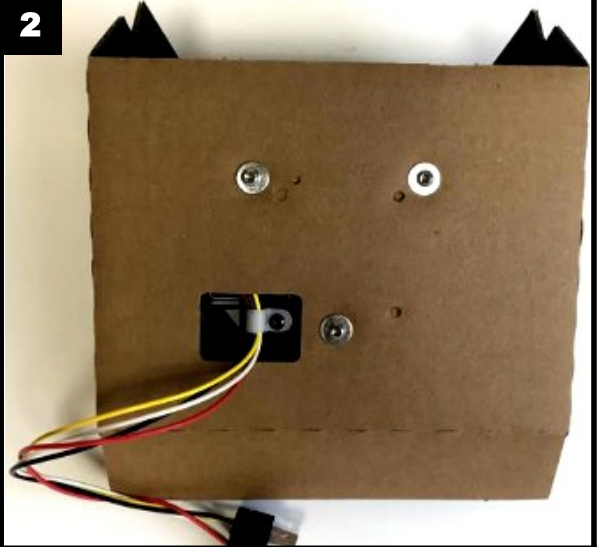
1. Remove all necessary parts to disconnect negative battery cable from battery.
2. Remove the OEM headlight bezel from the fairing by rotating counter clockwise. Store in a safe place for reinstallation later.
3. Remove the OEM headlight mounting bracket and OEM headlight from the fairing by removing the three Torx screws on the front of the OEM headlight mounting bracket. Disconnect the headlight from the OEM headlight connector. Save the three OEM Torx screws for reinstallation. Shown in **Figure 1, Arrow A**.



Questions? Email: [info@CustomDynamics.com](mailto:info@CustomDynamics.com) or Call us at: 1 (800) 382-1388 M-TH 8:30AM-5:30PM / FR 9:30AM-5:30PM EST

## Installation Instructions - Page 2

4. Remove OEM headlight from OEM headlight mounting bracket by removing the four Torx screws on the back of the headlight. Save the four OEM Torx screws and the OEM headlight mounting bracket for reinstallation.
5. Remove the cardboard backing and nylon cable clamp and the three Torx fasteners on the back of the ProBEAM® Headlight and save for reinstallation. Shown in **Figure 2**.
6. Install the ProBEAM® headlight to the ProBEAM® Headlight Adapter Bracket by using two of the Torx fasteners from Step 5. in the top two mounting holes of the ProBEAM® Headlight. Shown in **Figure 3**.
7. Using the remaining Torx fastener and the nylon cable clamp from Step 5 and mount to the bottom hole of the ProBEAM® Headlight. Shown in **Figure 3**.
8. Mount the ProBEAM® Headlight Adapter Bracket assembly to the OEM headlight mounting bracket using the four supplied 1/4-20 Nylon Jam Nuts with the OEM Torx screws from Step 4. Shown in **Figure 4**.
9. Connect the H4 connector of the Headlight Adapter Harness to the ProBEAM® Headlight.
10. Connect the ProBEAM® Headlight with Headlight Adapter Harness to the motorcycle's OEM headlight connector.
11. Reinstall ProBEAM® Headlight and headlight mounting bracket to the fairing using the three Torx screws from Step 3. Make sure the wires and components of the harness are not pinched during installation, excessive heat or moving parts.
12. Reinstall all necessary parts to reconnect negative battery cable to the battery.
13. Adjust the ProBEAM® Headlight. **Note: Scan QR Code below for specific instructions on proper measurements for aiming headlight.** The three Allen head fasteners shown in **Figure 1**, **Arrow B** on Page 1 are for adjusting the headlight. The bottom Allen head fastener adjusts the headlight beam up and down and the two Allen head fasteners on either side adjust the headlight beam side to side.
14. Reinstall OEM bezel by turning clockwise until seated.
15. Test all operations of headlight.



## Installation Instructions - Page 2

### LRS Installation:

1. Remove all necessary parts to disconnect negative battery cable from battery.
2. Remove the quarter fairing from the motorcycle.
3. Remove the OEM headlight from the OEM headlight mounting bracket. Disconnect the headlight from the OEM headlight connector.
4. Remove OEM headlight from OEM headlight mounting bracket by removing the four Torx screws on the back of the headlight. Save the four OEM Torx screws and the OEM headlight mounting bracket for reinstallation.
5. Remove the cardboard backing and nylon cable clamp and the three Torx fasteners on the back of the ProBEAM® Headlight and save for reinstallation. Shown in **Figure 2**.
6. Install the ProBEAM® Headlight to the ProBEAM® Headlight Adapter Bracket by using two of the Torx fasteners from Step 5. in the top two mounting holes of the ProBEAM® Headlight. Shown in **Figure 3**.
7. Using the remaining Torx fastener and the nylon cable clamp from Step 5 and mount to the bottom hole of the ProBEAM® Headlight. Shown in **Figure 3**.
8. Mount the ProBEAM® Headlight Adapter Bracket assembly to the OEM headlight mounting bracket using the four supplied 1/4-20 Nylon Jam Nuts with the OEM Torx screws from Step 4. Shown in **Figure 5**.
9. Connect the H4 connector of the Headlight Adapter Harness to the ProBEAM® Headlight.
10. Connect the ProBEAM® Headlight with Headlight Adapter Harness to the motorcycle's OEM headlight connector.
11. Reinstall ProBEAM® Headlight and headlight mounting bracket to the motorcycle using the three Torx screws from Step 3. Make sure the wires and components of the harness are not pinched during installation, excessive heat or moving parts.
12. Reinstall all necessary parts to reconnect negative battery cable to the battery.
13. Adjust the ProBEAM® Headlight. **Note: Scan the QR code below for specific instructions on proper measurements for aiming the headlight.**
14. Reinstall the quarter fairing back on motorcycle. Shown in **Figure 6**.
15. Test all operations of headlight.



5



6

