



**Custom Dynamics® ProBEAM® LED Halo Fog Lamps**  
**Installation Instructions**

We thank you for purchasing the Custom Dynamics® ProBEAM® LED Halo Fog Lamps. Our products utilize the latest technology and high quality components to ensure you the most reliable service. We offer one of the best warranty programs in the industry and we back our products with excellent customer support, if you have questions before or during installation of this product please call Custom Dynamics® at 1(800) 382-1388.

**Part Number: PB-FOG-UNV-B, PB-FOG-UNV-C**

- Package Contents:**
- ProBEAM® LED Halo Fog Lamp (2)
  - Wiring Harness
  - Chrome Wire Tie (10)
  - Black Wire Tie (10)
  - Instructions



**Fits:** Universal 12VDC

Plug & Play with Custom Dynamics® Auxiliary Switches CD-AUX-UNV-B, CD-AUX-UNV-C or CD-AUX-HD-B (sold separately).

- Installation:**
1. Remove the seat and disconnect the motorcycle's negative (-) battery cable from the battery.
  2. Determine desired place to mount the driving lights. For optimal performance, it is recommended the fog lamps be mounted horizontally on the outermost section of the engine guard by means of a mounting clamp (not included). Refer to Photo 1.
  3. Install the ProBEAM® LED Halo Fog Lamp mounting stud into the clamp and secure to the mounting clamp as shown in Photo 1.

ATTENTION

Please read all Information below before Installation

**CAUTION:** Unit is HOT when operating, DO NOT TOUCH.

**Warning:** To prevent possible electrical shock, disconnect the negative Battery terminal before installing this product.

**Important:** This product is designed and intended for use as auxiliary lighting only. It is NOT intended to replace any original equipment lighting installed on the vehicle and should not be used for that purpose. This product must be wired so that it does not interfere with any original equipment lighting.

**Note:** Mounting studs are 5/16" in diameter, please verify your mounting clamp hole before installation.

**Note:** Fog lamps are setup to be mounted in a horizontal position. For vertical mounting (perpendicular to the ground) the optics will need to be rotated 90 degrees. To prevent damage to the unit, please refer to the video at <https://ti->



**Posi-Tap™**  
TAP CONNECTOR

**QUICK & EASY**

- 1 Insert Hot Wire
- 2 Tighten
- 3 Strip Leads
- 4 Insert & Tighten

NO CRIMPING  
NO TOOLS NEEDED

- TAPS WIRES WITHOUT CUTTING
- TOTAL WIRE INTEGRITY IS MAINTAINED
- INSTALLS IN SECONDS BY HAND
- NO CRIMPING OR TOOLS REQUIRED
- REUSABLE OR PERMANENT
- LESS RESISTANCE
- VIBRATION PROOF
- FULLY INSULATED

POWERS UP TO (4) LEADS AT ONCE!

4. Route wiring of the ProBEAM® LED Halo Fog Lamp under the seat. Use the provided wire ties to secure the wire to prevent damage. When routing the wire, add a drip loop to prevent water from running back into the Fog Lamp. Refer to Photo #2 on Page 2.

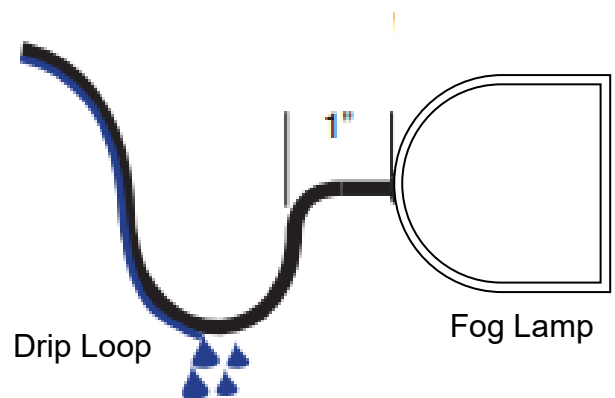
**Questions? Call us at: 1 (800) 382-1388 M-TH 8:30AM-5:30PM / FR 9:30AM-5:30PM EST**

## Installation Instructions - Page 2

### Installation:

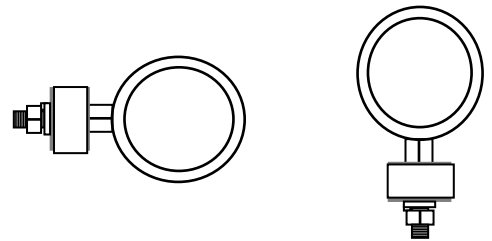
5. Install the ProBEAM® LED Halo Fog Lamp wiring harness. Connect the Blue and Orange wires with the pre installed Posi-Tap™ connectors to a switched ( + ) 12vdc power source. Connect the 2 black wires with the pre installed Posi-Tap™ connectors to ground.
6. Mount the ON/OFF switch, on the Fog Lamp wiring harness, in a convenient location with the installed double-sided tape. Clean the location with denatured alcohol and allow to dry.
7. Connect the wires from the individual fog lamps to the Fog Lamp wiring harness.
8. Connect the battery lead from the Fog Lamp wiring harness to the positive ( + ) battery terminal .
9. Reconnect the motorcycle's negative ( - ) battery cable from the battery. Test function and adjust aim of lighting as needed. **CAUTION:** Fog Lamps are HOT while in operation, wear protective hand gear before making any adjustments to the Fog Lamps. Make sure they are tight before riding

2



3

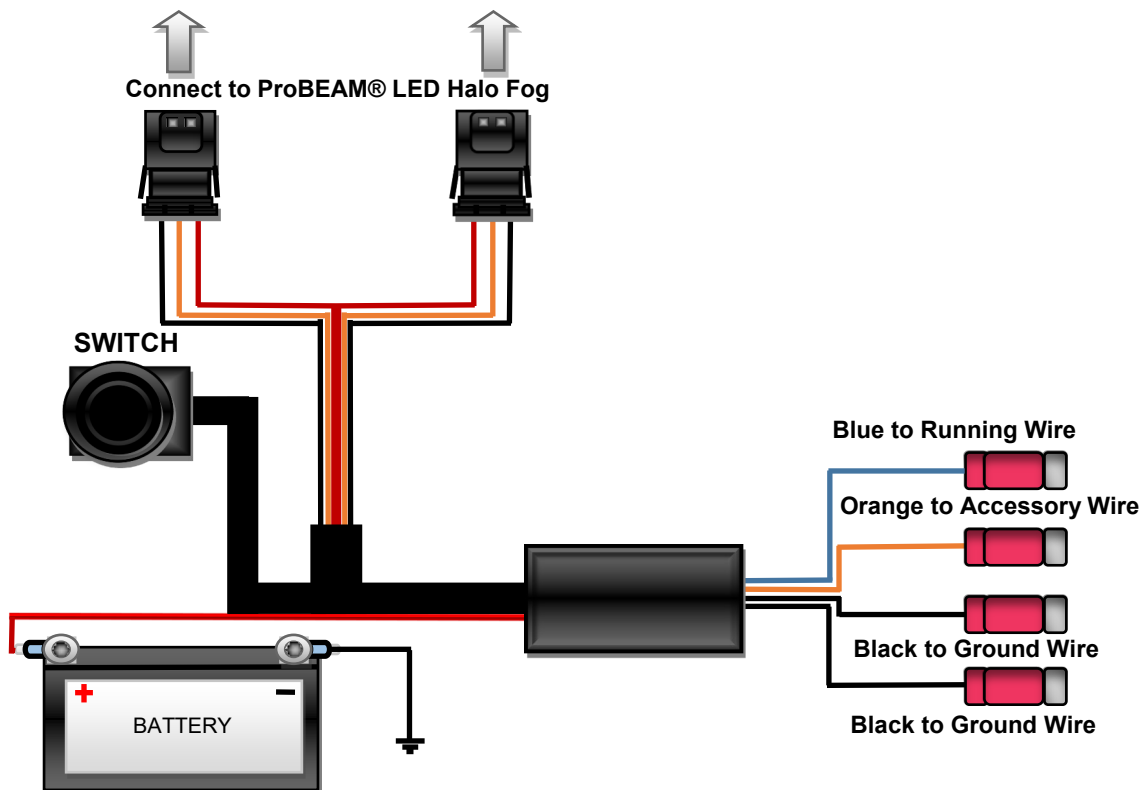
### Mounting Orientation



Horizontal

Vertical

## Wiring Diagram



Questions? Call us at: 1 (800) 382-1388 M-TH 8:30AM-5:30PM / FR 9:30AM-5:30PM EST