

PROBEAM®

BY CUSTOM DYNAMICS®

Custom Dynamics® ProBEAM® Indian Rear Turn Signals Installation Instructions

We thank you for purchasing the Custom Dynamics® ProBEAM® Indian Rear Turn Signals! Our LEDs offer maintenance free service and higher visibility. Our ProBEAM® product line utilizes the latest technology and automotive grade components to ensure the highest level of reliable service. Custom Dynamics® offers one of the best warranty programs and customer support in the industry. If you have any questions during the installation of this product please call us at 1(800) 382-1388.

Part Number: PB-IND-RTS-A-B PB-IND-RTS-A-C
PB-IND-RTS-R-B PB-IND-RTS-R-C

US Patent 851817, 851327
Chinese Patent ZL-201830409102.8, ZL-201830409095.1

Package Contents:

- ProBEAM® Indian Rear Turn Signals (1 pair)
- Mounting Bolt (2)
- Instructions

Fitment: Plug and play Rear Turn Signal replacement on 2014-2020 Indian® Chief®, Springfield™ and Roadmaster® Models (except 2020 Springfield Dark Horse, Chief Dark Horse & Roadmaster Dark Horse), 2014-2020 Chieftain® Classic, 2014-2019 Chieftain® Elite, 2014-2018 Chieftain®, Chieftain® Dark Horse, & Chieftain® Limited



ATTENTION

Please read all information below before installation

Warning: Disconnect negative battery cable from battery; refer to owner's manual. Failure to do so may result in electrical shock, injury, or fire. Secure negative battery cable away from positive side of battery and all other positive voltage sources on vehicle.

Important: Motorcycle should be secured on a level surface for installation.

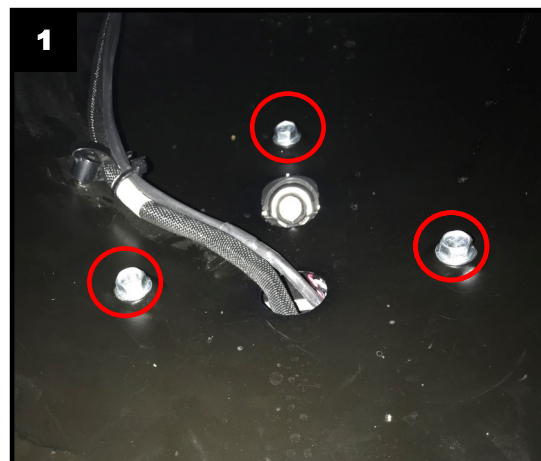
Note:

- Use care in removing the OEM turn signal housings, so as not to scratch or mar the chrome mounting bracket. Custom Dynamics® is not liable for damage to chrome during installation.



Installation:

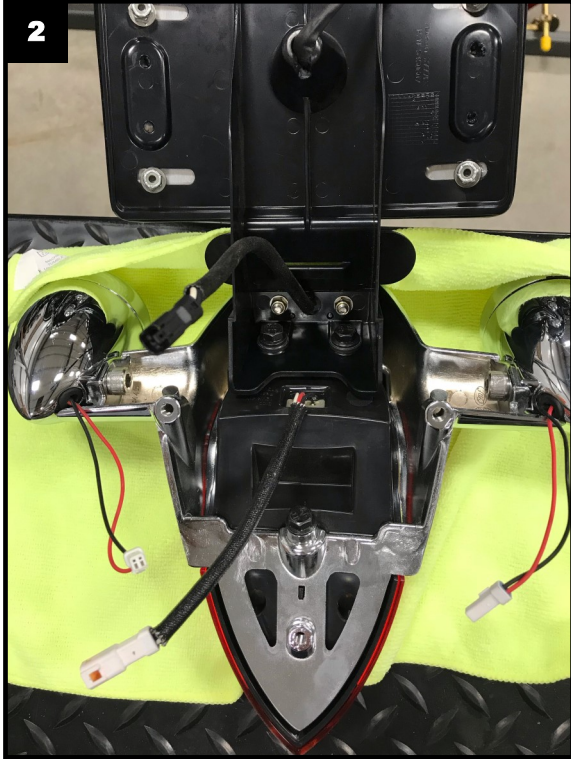
1. Remove motorcycle seat and disconnect the negative battery cable from the battery. Consult your owners manual if unsure of this process.
2. Remove the 3 bolts securing the taillight assembly to the rear fender as shown in Picture 1.



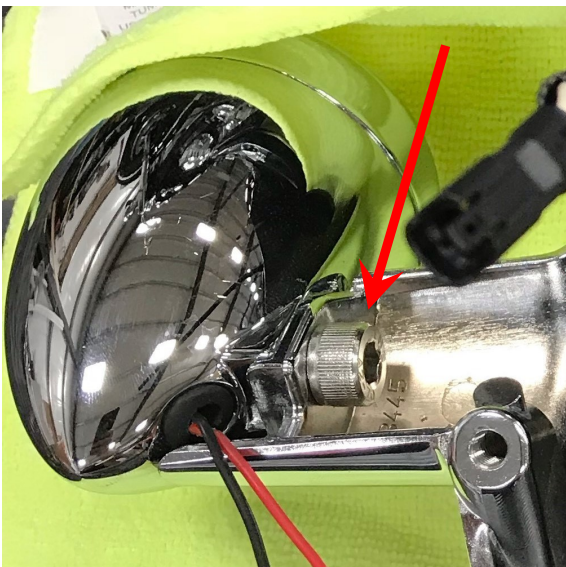
Questions? Call us at: 1 (800) 382-1388 M-TH 8:30AM-5:30PM / FR 9:30AM-5:30PM EST

Installation Instructions - Page 2

3. Disconnect the 4 Taillight assembly electrical connections and lay the Taillight assembly facedown on a scratch free surface as shown in Picture 2.



4. Remove the existing Left and Right Turn Signals by removing the mounting bolt as shown in Picture 3.



5. Install the new ProBEAM® Turn Signals using the provided mounting bolt. Be sure to use a thread locking agent to prevent the mounting bolts from loosening.
6. Reconnect the Taillight and Turn Signal electrical connectors, secure the wires from becoming cut, frayed, or pinched.
7. Reinstall the Taillight assembly on the motorcycle.
8. Reconnect the negative battery cable and install the seat.
9. Test operation of all lighting before riding.

PROBEAM®
BY CUSTOM DYNAMICS®