

# Custom Dynamics® M109 Front LED Installation Instructions

- 1) Remove the front turn signal support bracket from bike. (see Pic #1)
- 2) Mark both side brackets as shown with a cut line to trim off old turn signal mounting tabs. (see Pics # 2 & 3)
- 3) Although not a must, you can use a file or sander to round off edges after cutting for a more finished look. Also, after cutting, we recommend using some black touch up to cover trimmed edges of bracket to prevent rust. (see Pics # 4, 5 & 6)
- 4) Reinstall turn signal bracket back onto bike.
- 5) Each front turn signal has two connectors coming from it. Cut the wire about 1.5 inches back from both connectors. (see Pic # 7)
- 6) Using the supplied Posi-Locks, hook the BLACK (left turn) wire from the old turn connector to the RED wire from the 2 in one unit. Hook the BLACK/WHITE (ground) wire from the old turn signal connector to the BLACK wire from the 2 in 1 unit. Hook the Brown wire (power) to the ORANGE wire from the 2 in 1 unit. (see Pic #9)
- 7) Using the supplied Posi-Locks, hook the Green (right turn) wire from the old turn connector to the RED wire from the 2 in 1 unit. Hook the BLACK/WHITE (ground) wire from the old turn signal connector to the BLACK wire from the 2 in 1 unit. Hook the Brown wire (power) to the ORANGE wire from the 2 in 1 unit. (see Pic #9)
- 8) Install assembly onto the turn signal bracket at the old chrome cover mounting point on the bottom of the bracket. Use 6 mm bolt to attach Front Runner centering Front Runner with front end. (see Pic # 12) If your M109 does not have this mounting tab, we have supplied one for you. Remove push pin as show in Pic #13. Install supplied mounting tab as show in Pic #14. Re-secure wire harness with supplied tie wrap as show in Pic #15.
- 9) Whenever switching turn signals from regular bulbs to LEDs, we recommend changing the flasher to our EDFR non load dependent flasher for proper flash rate. After installing load unit, test operation of LEDs in all modes.

For Color Pictures Go to: <http://www.customdynamics.com/instructions.html>



Pic# 1



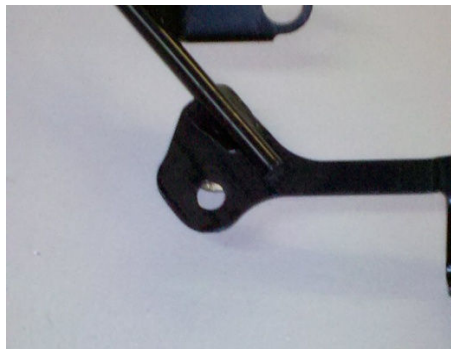
Pic# 2



Pic# 3



Pic# 4



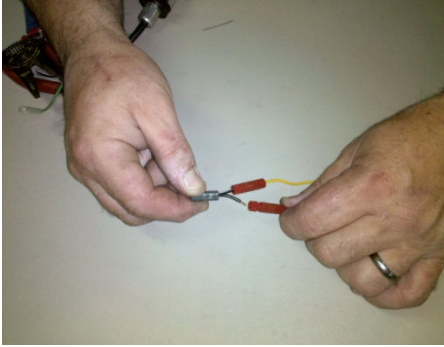
Pic# 5



Pic# 6



Pic# 7



Pic# 8



Pic# 9



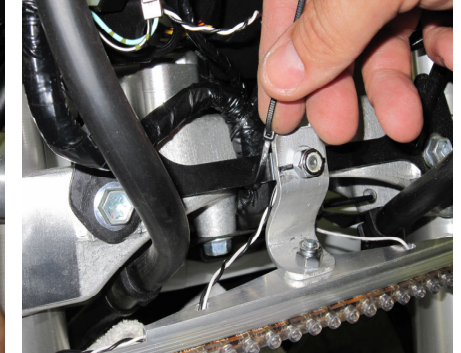
Pic# 12



Pic #13



Pic #14



Pic #15