



Custom Dynamics® LED Fork Reflectors Installation Instructions

We thank you for purchasing the Custom Dynamics® LED Fork Reflectors. Our products utilize the latest technology and high quality components to ensure you the most reliable service. We offer one of the best warranty programs in the industry and we back our products with excellent customer support, if you have questions before or during installation of this product please call Custom Dynamics® at 1(800) 382-1388.

Part Numbers: CD-FORK-UNV-AB CD-FORK-UNV-AC
CD-FORK-UNV-SB CD-FORK-UNV-SC

Package Contents:

- LED Fork Reflectors (pair)
- UNV Adapter Harness (2)
- Wire Tie Wrap (10)
- Isopropyl Alcohol Wipe (1)



Fits: Universal 12VDC with a switch positive input for the turn signal

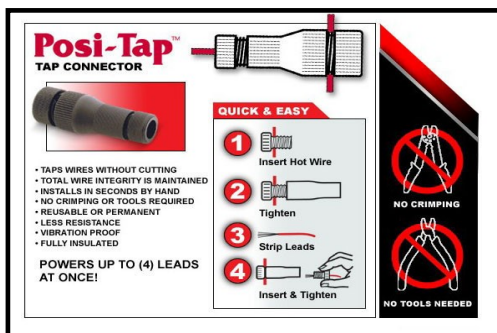


Please read all Information below before Installation

Warning: Disconnect negative battery cable from battery; refer to owner's manual. Failure to do so may result in electrical shock, injury, or fire. Secure negative battery cable away from positive side of battery and all other positive voltage sources on vehicle.

Safety First: Always wear appropriate safety gear including safety glasses when performing any electrical work. It is highly recommended that safety glasses be worn throughout this installation process. Be sure vehicle is on level surface, secure and cool.

Important: This product is designed and intended for use as auxiliary lighting only. It is NOT intended to replace any original equipment lighting installed on the vehicle and should not be used for that purpose. This product must be wired so that it does not interfere with any original equipment lighting.



Installation:

1. Disconnect the negative battery cable from the battery.
3. Remove the OEM fork reflector from the lower fork leg. Clean the reflector area removing any debris or tape from the OEM Reflector.
4. Wipe the reflector area down with the provided Isopropyl Alcohol Wipe and let dry.
5. Remove the protective red film from the back of the LED Fork Reflectors. Align the LED Fork Reflectors in the reflector area and press into place. The LED Fork Reflector should be mounted with the wire exiting the top, rear side of the light.
1. Route the wiring harness from each LED Fork Reflector to the point of termination. Make sure wiring does not come in contact with any moving or high heat parts.
2. Connect the UNV Adapter Harnesses to each LED Fork Reflector harness.
3. Using the attached Posi-Tap connectors, connect the UNV Adapter Harness to vehicle lighting circuits, see Wiring Diagram on Page 2.
4. Using the provided wire ties, secure the LED Fork Reflectors harness to prevent damage.
5. Reconnect the negative battery cable to the battery and reinstall the seat.
6. Test operation of all lighting for proper running, brake and turn before riding.

Questions? Call us at: 1 (800) 382-1388 M-TH 8:30AM-5:30PM / FR 9:30AM-5:30PM EST

Wiring Diagram

UNV Adapter Harness

