



Dual Color Dynamic TruWRAPZ® Installation Instructions

We thank you for purchasing the Custom Dynamics® Dual Color Dynamic TruWRAPZ® ! Our products utilize the latest technology and high quality components to ensure you the most reliable service. We offer one of the best warranty programs in the industry and we back our products with excellent customer support, if you have questions before or during installation of this product please call Custom Dynamics® at 1(800) 382-1388.

Part Numbers: TW39AWS TW49AWS
 TW41AWS TW56AWS
 TW43AWS

Package Contents:

- Dynamic TruWRAPZ® (pair)
- AW-CONVERTER (pair)
- Black #205 Heat Shrink Tubing (2)
- Isopropyl Alcohol Wipe (1)
- Chrome Zip Ties (10)
- SSWL Stainless Steel Wire Loom (6')
- Wire Loom grey shrink Tubing (2)
- Posi-Locks™ (8)
- Posi-Taps™ (6)



⚠ ATTENTION ⚠

Please read all Information below before Installation

Important: This product is designed and intended for use as auxiliary lighting only. It is NOT intended to replace any original equipment lighting installed on the vehicle and should not be used for that purpose. This product must be wired so that it does not interfere with any original equipment lighting.

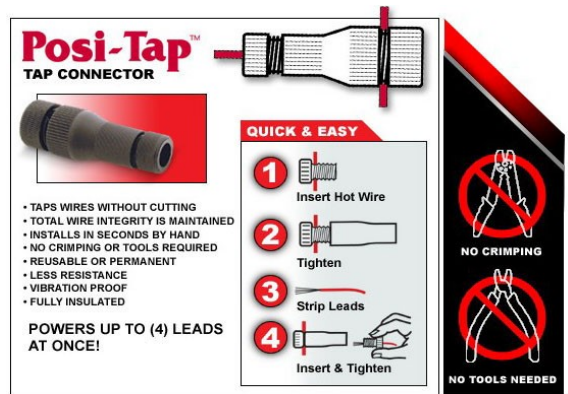
Note: Please read all instructions before beginning installation. Some wiring knowledge and soldering experience will be helpful. Consult your vehicle detailed service manual for wiring information and color codes. Use a meter or test light to verify wiring before cutting or tapping any vehicle wiring. If the steps contained within are beyond your skillset, do not attempt installation, contact a qualified mechanic or dealership to assist you.

Safety First: Always wear appropriate safety gear including safety glasses when performing any electrical work. It is highly recommended that safety glasses be worn throughout this installation process. Be sure vehicle is on level surface, secure and cool.

Warning: Disconnect negative battery cable from battery; refer to owner's manual. Failure to do so may result in electrical shock, injury, or fire. Secure negative battery cable away from positive side of battery and all other positive voltage sources on vehicle.

Note: It is recommended that the installation of this product should be performed in a controlled environment of 65 F or above. Allow 24 hours for the tape to properly adhere before riding or washing the bike.

Important: Do not over-tighten the metal tie-wrap during installation! Units should be snug but not tight as it works in conjunction with the 3M tape to stay attached.



Installation

1. Select location to mount Dynamic TruWRAPZ®. A good location is under triple trees.
2. Test fit on desired fork location.
3. Clean both fork tubes where they will be mounted with the provided Isopropyl Alcohol Wipe. Allow to dry for .
4. Do not remove red 3M liner at this point in time. Wrap first Dynamic TruWRAPZ® around fork, be sure excess red 3M Liner hangs down so that you can easily access it.
5. Insert metal tie-wrap end through the tie locking hole and pull snug, but do not over-tighten. Leave enough slack to remove the red tape liner later.

Questions? Call us at: 1 (800) 382-1388 M-TH 8:30AM-5:30PM / FR 9:30AM-5:30PM EST

Installation Instructions - Page 2

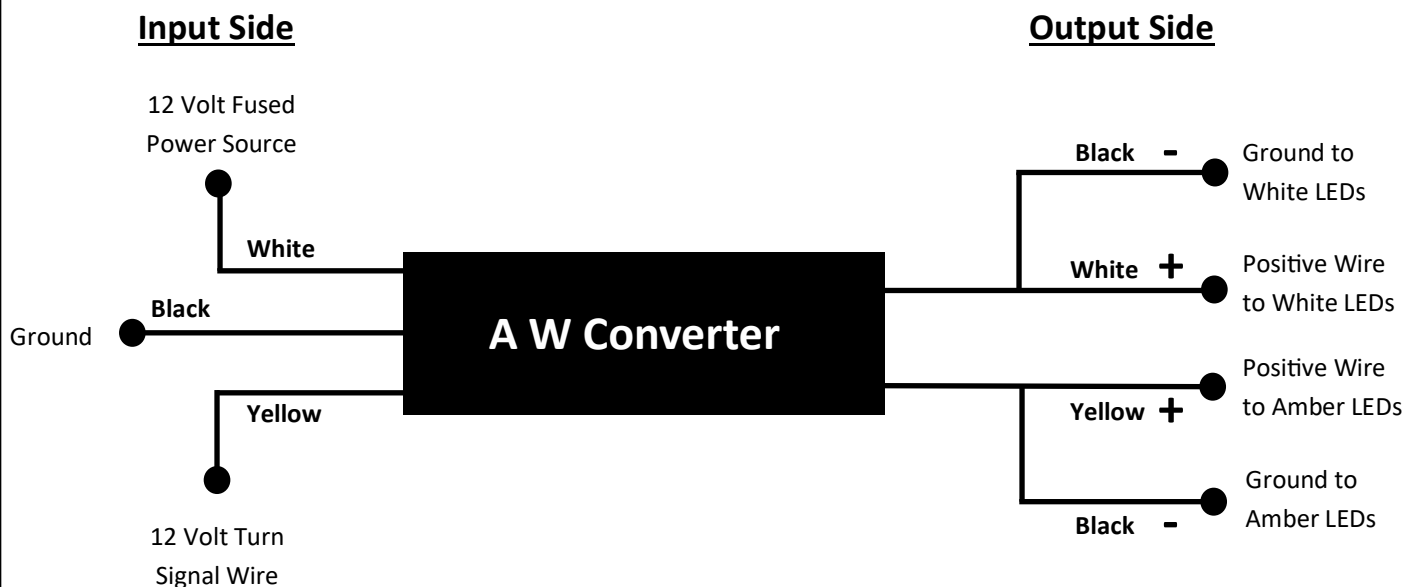
- Take loose end of the red 3M liner and slowly pull to remove liner and expose tape to fork. Give zip tie a final pull to lock 3M tape to fork. Cut off Excess from metal tie wrap, take care as the metal can be very sharp once cut.
- Repeat steps 4-6 for remaining Dynamic TruWRAPZ® .
- Route wires from Dynamic TruWRAPZ® to stock turn signal wiring, be sure to leave the proper slack to allow handlebars to fully turn in each direction. Cut off excess wires.
- Open stainless steel wire braid with dull object, the ball end of a motorcycle antenna works great. Cut stainless steel wire braid to proper length for left and right wires.
- Insert left and right wires into stainless steel wire braid. Slide a piece of gray heat shrink over each stainless steel wire braid and continue down until it reaches the Dynamic TruWRAPZ®. Leave about 1/4" gap between stainless steel wire braid and units, use gray heat shrink to bridge the gap and hold stainless steel wire loom in place. Heat gray heat shrink with heat gun or hair dryer until it shrinks into place. Once wires are dressed, use the provided Chrome zip ties to attach wires to forks.
- Attach the AW-Converters to the ends of the TruWRAPZ® wiring using the provided Posi-Lock™ connectors (see diagram below). Using enclosed Posi-Taps™, make connections to stock turn signal wires using the following colors :
 - White wire—to the running light constant power source (typically Blue on HD's)
 - Amber wire—to turn signal wire left or right (typically Brown=Right/Purple=Left)
 - Black wire—to ground wire (typically black)
- Using enclosed tie wraps, tie up any loose wires.
- Check operation of both Dynamic TruWRAPZ® in running and turn signal modes. The White LED's will operate at full intensity in running mode, then turn off when turn signal is on, and the Amber LED's will flash full contrast on-off-on. When the turn signal is turned off, the white LED's will turn back on.

Input Side (3 wires):

- Connect the White wire to a 12 volt fused constant power source.
- Connect Yellow wire to 12 volt turn signal wire
- Connect Black wire to Ground

Output Side (4 wires):

- Connect white wire to positive wire of White LEDs
- Connect the Black wire to ground of White LEDs
- Connect the Yellow wire to positive of the Amber LEDs
- Connect the Black wire to ground of the Amber LEDs



Questions? Call us at: 1 (800) 382-1388 M-TH 8:30AM-5:30PM / FR 9:30AM-5:30PM EST