

PROBEAM®

BY CUSTOM DYNAMICS®

Custom Dynamics® ProBEAM® Universal LED Turn Signal Housings Installation Instructions

We thank you for purchasing the Custom Dynamics® ProBEAM® Universal LED turn signal Housings! Our LEDs offer maintenance free service and higher visibility. Our ProBEAM® product line utilizes the latest technology and automotive grade components to ensure the highest level of reliable service. Custom Dynamics® offers one of the best warranty programs and customer support in the industry. If you have any questions during the installation of this product please call us at 1(800) 382-1388.

Part Number: PB-UNV-FTS-AW-B PB-UNV-FTS-AW-C
PB-UNV-RTS-R-B PB-UNV-RTS-R-C
PB-UNV-RTS-RR-B PB-UNV-RTS-RR-C
PB-UNV-TS-A-B PB-UNV-TS-A-C
PB-UNV-ECE-AW-B PB-UNV-ECE-AW-C

US Patent: 830597, 830595, 830596, 851817, 851327
Chinese Patent: ZL-201830045649.4, ZL-201830409102.8, ZL-201830409095.1,
ZL201830045624.4

Package Contents:

- Universal Turn Signal Housing (1 pair)
- 1/4" x 1-3/4" Heat Shrink (2)
- 1/8" x 1" Heat Shrink (6)

Fitment: Universal Fitment



ATTENTION

Please read all Information below before Installation

Warning: Disconnect negative battery cable from battery; refer to owner's manual. Failure to do so may result in electrical shock, injury or fire. Secure negative battery cable away from positive side of battery and all other positive voltage sources on vehicle.

Safety First: Always wear appropriate safety gear including safety glasses when performing any electrical work. It is highly recommended that safety glasses be worn throughout this installation process. Be sure vehicle is on level surface, secure and cool.

Important: When mounting through fender walls, please make sure that the mounting stud/wiring has enough space so that it will not come in contact with the tire. Trimming the stud is not an option as this will void the water seal and possibly harm the wiring.

Note: Some wiring knowledge is required for this installation. Consult your vehicle detailed service manual for wiring information and color codes. Use a meter or test light to verify wiring before tapping any vehicle wiring. If the steps contained within are beyond your skillset, do not attempt installation, contact a qualified mechanic or dealership to assist you.

Note: Depending on vehicle and application you may experience fast flashing or no flashing from your turn signals after installation. If so, a load equalizer or Signal Stabilizer™ is recommended. Contact us for details.



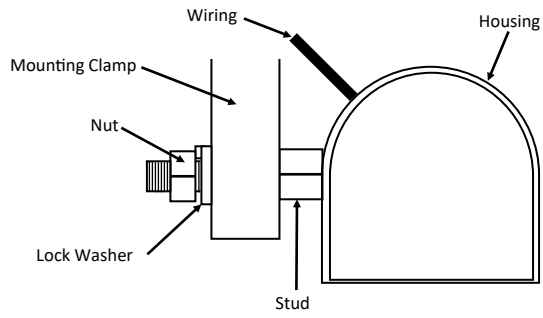
Installation:

1. Determine desired place to mount the Universal Turn Signal Housings. Please read the information in the Attention column before beginning installation.
2. Carefully unpack Universal Turn Signal Housings from the package, careful to not pull on any wires or damage the billet surface.
3. Guide the wires through the hardware and mounting clamp or fender wall and secure the mounting stud as shown below. Make sure the desired angle of the housing is correct before tightening.
4. Route wiring to the point of termination, use the vehicle's wire harness to attach to with tie-wraps (not included). Make sure wiring does not come in contact with any moving or high heat parts. Ensure wiring cannot be pinched, cut or frayed.
5. See next page for wiring instructions.

Questions? Call us at: 1 (800) 382-1388 M-TH 8:30AM-5:30PM / FR 9:30AM-5:30PM EST

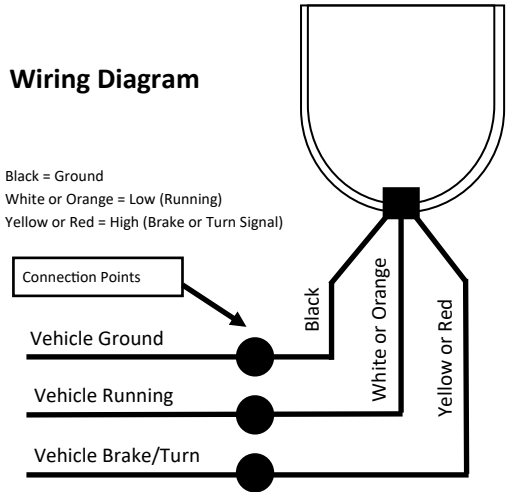
Installation Instructions - Page 2

Installation Diagram



Wiring Diagram

Black = Ground
White or Orange = Low (Running)
Yellow or Red = High (Brake or Turn Signal)



Questions? Call us at: 1 (800) 382-1388 M-TH 8:30AM-5:30PM / FR 9:30AM-5:30PM EST