



CUSTOMLED

Custom Dynamics® Magic Strobes™ Brake Flasher Installation Instructions

We thank you for purchasing the Custom Dynamics® Magic Strobes™ Brake Light Flasher! Our products utilize the latest technology and high quality components to ensure you the most reliable service. We offer one of the best warranty programs in the industry and we back our products with excellent customer support, if you have questions before or during installation of this product please call Custom Dynamics® at 1(800) 382-1388.

Part Number: MAGIC-STROBES-INDTP

Package Contents:

- Magic Strobes™ Brake Flasher (1)
- Tie Wraps (5)
- Tie Wrap Holder (1)
- Instructions

Fitment: 2015-2022 Indian Roadmaster, Roadmaster Limited, Roadmaster Dark Horse & Roadmaster Elite. (Does NOT Fit Indian® Roadmaster® Classic).



ATTENTION



Please read all Information below before Installation

Important: When changing settings on Magic Strobes™ module, bike power should be OFF.

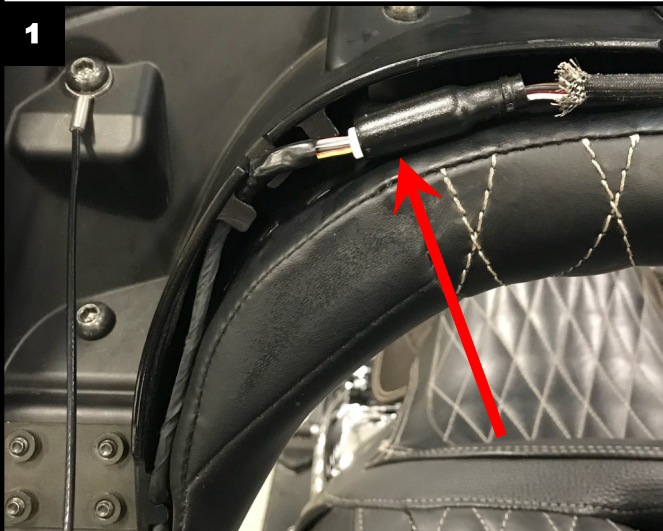
Caution: A stuck brake switch may cause this unit to overheat and fail. Unplug module immediately if this condition occurs.

Note: Although this device has been designed to significantly increase your braking visibility, flash/strobe patterns may not be street legal in your area. This Device is not DOT approved.



Installation

1. Secure motorcycle on level surface.
2. Disconnect negative battery cable from the battery.
3. With the trunk lid open, locate the Trunk rear lighting harness connector behind the passenger backrest on the left side of the Trunk lid. See figure 1
4. Connect the Magic Strobes™ module, in-line, into the Trunk rear lighting harness. See figure 2.
5. Re-connect the battery's negative battery cable to the negative of the battery.
6. Select desired pattern on the dial with power Off. (See page 2 for pattern Information)
7. Check operation of running, brake, and turn signal lights.
8. To change the brake pattern, turn bike off and turn dial to desired pattern.
9. Locate a secure place for the Magic Strobes™ unit that will not interfere with the closure of the Trunk lid. Secure with the enclosed tie-wraps so that unit or wiring harness will not move. See figure 3.



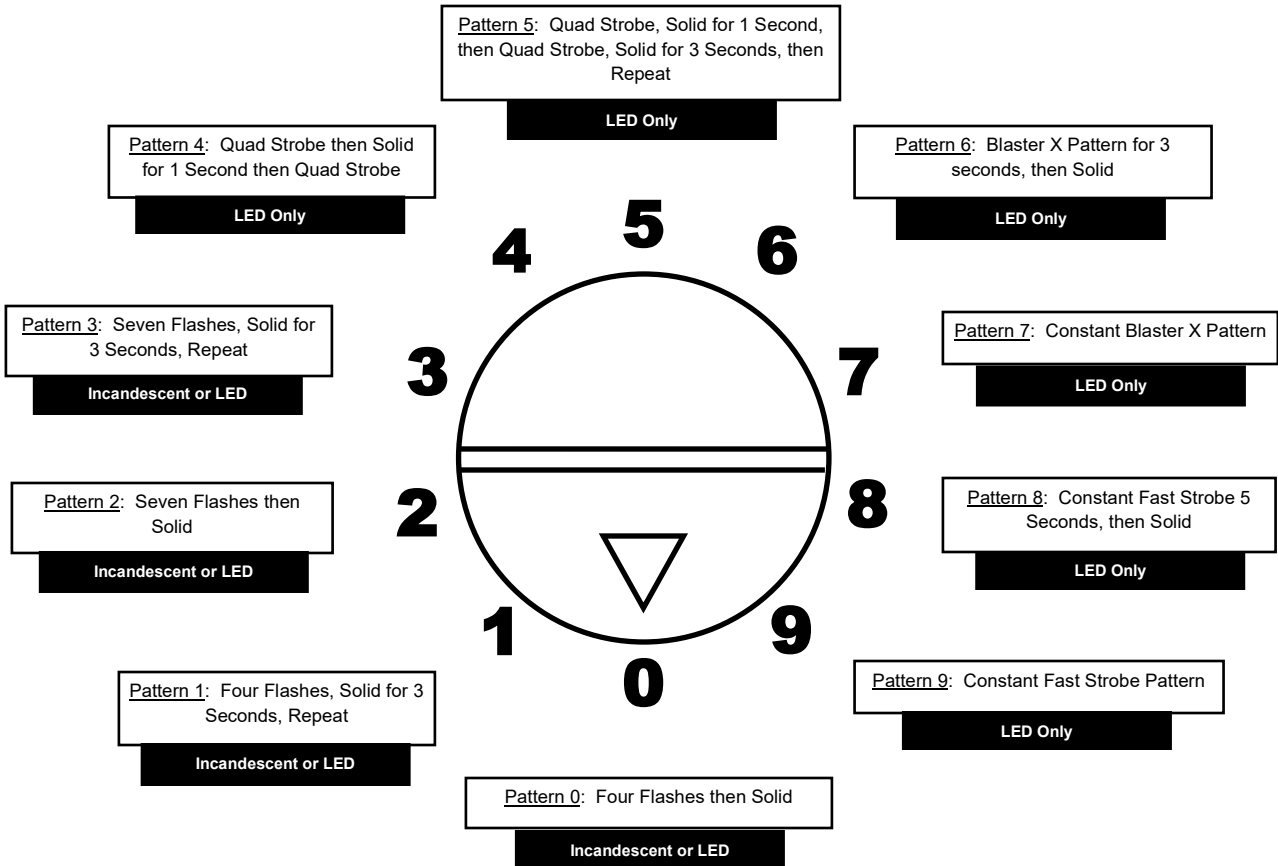
Questions? Call us at: 1 (800) 382-1388 M-TH 8:30AM-5:30PM / FR 9:30AM-5:30PM EST

Installation Instructions - Page 2



Flash Pattern Information

WARNING: Dial and switches should be maneuvered by hand only. Do not use any tool such as a screwdriver that could damage waterproof covers.



Questions? Call us at: 1 (800) 382-1388 M-TH 8:30AM-5:30PM / FR 9:30AM-5:30PM EST