

# PROBEAM®

BY CUSTOM DYNAMICS®

## Custom Dynamics® ProBEAM® Indian Rear Turn Signals Installation Instructions

We thank you for purchasing the Custom Dynamics® ProBEAM® Indian Rear Turn Signals! Our LEDs offer maintenance free service and higher visibility. Our ProBEAM® product line utilizes the latest technology and automotive grade components to ensure the highest level of reliable service. Custom Dynamics® offers one of the best warranty programs and customer support in the industry. If you have any questions during the installation of this product please call us at 1(800) 382-1388.

**Part Number:** PB-IND-RTS-A-B PB-IND-RTS-A-C  
PB-IND-RTS-R-B PB-IND-RTS-R-C

US Patent 851817, 851327  
Chinese Patent ZL-201830409102.8, ZL-201830409095.1

### Package Contents:

- ProBEAM® Indian Rear Turn Signals (1 pair)
- Mounting Bolt (2)
- Instructions

**Fitment: Front Turn Signal Replacement** on 2015-2020 Indian® Chief, Chief Vintage, Chief Classic, Chief Dark Horse, 2021 Vintage & Vintage Dark Horse, 2015-2022 Springfield & Springfield Dark Horse. **Rear Turn Signal Replacement** on 2015-2022 Indian® Roadmaster, 2018 Roadmaster Classic, 2020-2021 Roadmaster Elite, 2016-2022 Springfield, 2018-2019 Springfield Dark Horse, 2015-2019 Chief, Chief Classic, Chief Dark Horse, 2015-2020 Chief Vintage, 2021 Vintage, 2015-2018 Chieftain, Chieftain Dark Horse and 2018-2020 Chieftain Classic.



## ATTENTION

Please read all information below before installation

**Warning:** Disconnect negative battery cable from battery; refer to owner's manual. Failure to do so may result in electrical shock, injury, or fire. Secure negative battery cable away from positive side of battery and all other positive voltage sources on vehicle.

**Important:** Motorcycle should be secured on a level surface for installation.

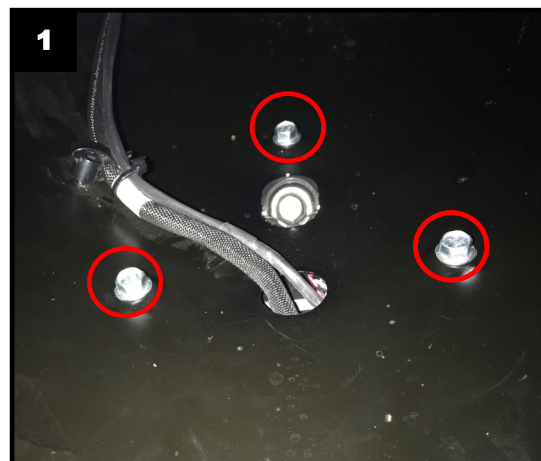
### Note:

- Use care in removing the OEM turn signal housings, so as not to scratch or mar the chrome mounting bracket. Custom Dynamics® is not liable for damage to chrome during installation.



### Installation:

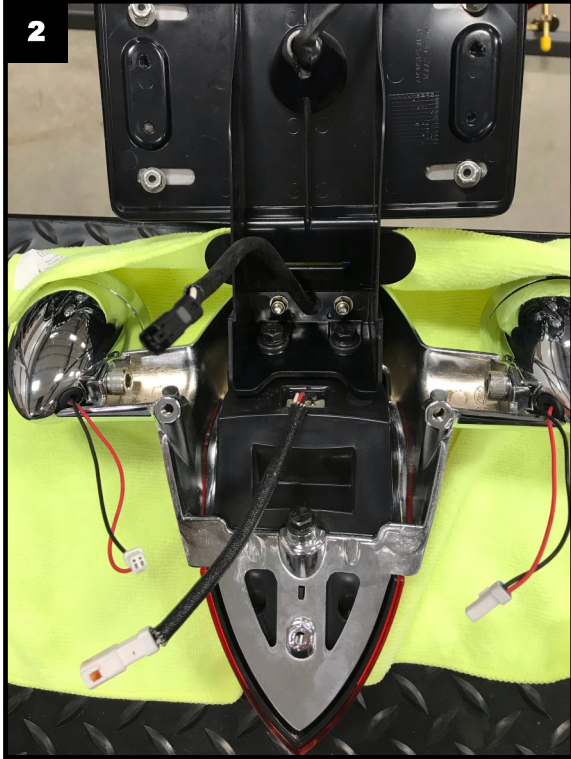
1. Remove motorcycle seat and disconnect the negative battery cable from the battery. Consult your owners manual if unsure of this process.
2. Remove the 3 bolts securing the taillight assembly to the rear fender as shown in Picture 1.



Questions? Call us at: 1 (800) 382-1388 M-TH 8:30AM-5:30PM / FR 9:30AM-5:30PM EST

## Installation Instructions - Page 2

3. Disconnect the 4 Taillight assembly electrical connections and lay the Taillight assembly facedown on a scratch free surface as shown in Picture 2.



4. Remove the existing Left and Right Turn Signals by removing the mounting bolt as shown in Picture 3.



5. Install the new ProBEAM® Turn Signals using the provided mounting bolt. Be sure to use a thread locking agent to prevent the mounting bolts from loosening.
6. Reconnect the Taillight and Turn Signal electrical connectors, secure the wires from becoming cut, frayed, or pinched.
7. Reinstall the Taillight assembly on the motorcycle.
8. Reconnect the negative battery cable and install the seat.
9. Test operation of all lighting before riding.

**PROBEAM®**  
BY CUSTOM DYNAMICS®