



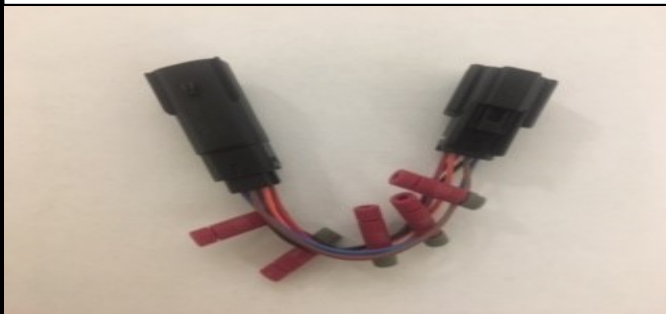
Custom Dynamics® Harley Davidson® Wiring Adapter Installation Instructions

We thank you for purchasing the Custom Dynamics® Harley Davidson® Wiring Adapter. Our products utilize the latest technology and highest quality components to ensure you the most reliable service. We offer one of the best warranty programs in the industry and we back our products with excellent customer support, if you have questions before or during installation of this product please call Custom Dynamics® at 1(800) 382-1388.

Part Numbers: MPR-BCM

Package Contents:

- HD BCM Wiring Adapter



Fits: 2014-2021 Harley-Davidson® Road King®, Street Glide®, Road Glide®, Electra Glide®, and Ultra touring models (including CVO™ models).



ATTENTION



Please read all Information below before Installation

Warning: Disconnect negative battery cable from battery; refer to owner's manual. Failure to do so may result in electrical shock, injury, or fire. Secure negative battery cable away from positive side of battery and all other positive voltage sources on vehicle.

Safety First: Make sure the bike is parked on a level surface and bike's mechanical components are cool to the touch.



Installation:

1. Locate connector for Rear Harness under Seat.
2. Unplug connectors and plug in Adapter.
3. Connect wires as needed using Posi-Taps.

Black—Ground

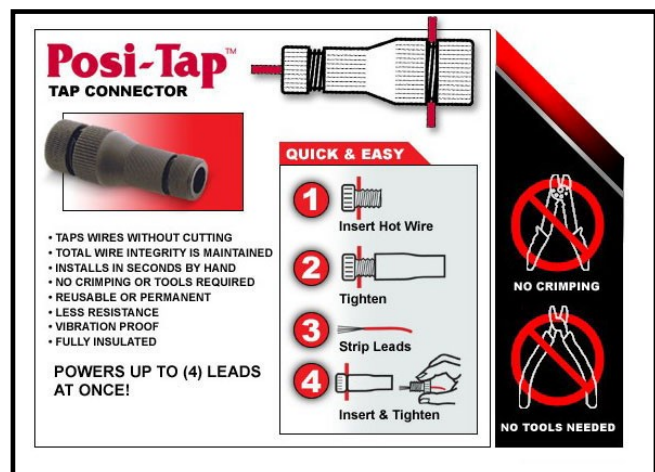
Blue— Running

Red— Brake

Brown—Right Turn/Brake

Purple—Left Turn/Brake

Orange—Aux Power
4. Check operation of all lights.
5. Re-install seat.



Questions? Call us at: 1 (800) 382-1388 M-TH 8:30AM-5:30PM / FR 9:30AM-5:30PM EST