



Custom Dynamics® LED Halo Headlight Trim Ring Installation Instructions

We thank you for purchasing the Custom Dynamics® LED Halo Headlight Trim Ring. Our products utilize the latest technology and high quality components to ensure you the most reliable service. We offer one of the best warranty programs in the industry and we back our products with excellent customer support, if you have questions before or during installation of this product please call Custom Dynamics® at 1(800) 382-1388.

Part Number: CDTB-7TR-4B, CDTB-7TR-4C

Package Contents:

- LED Halo Headlight Trim Ring (1)
- ST Harness (1)
- 8/32 X 1 Black or Polished Screw (1)

Fitment: All 1996-2005 Electra Glide® Ultra Classic®, Ultra Limited®, Street Glide®, and TriGlide® models (Including CVO™) (DOES NOT FIT Road King®)



ATTENTION



Please read all Information below before Installation

Installation: Trim Ring

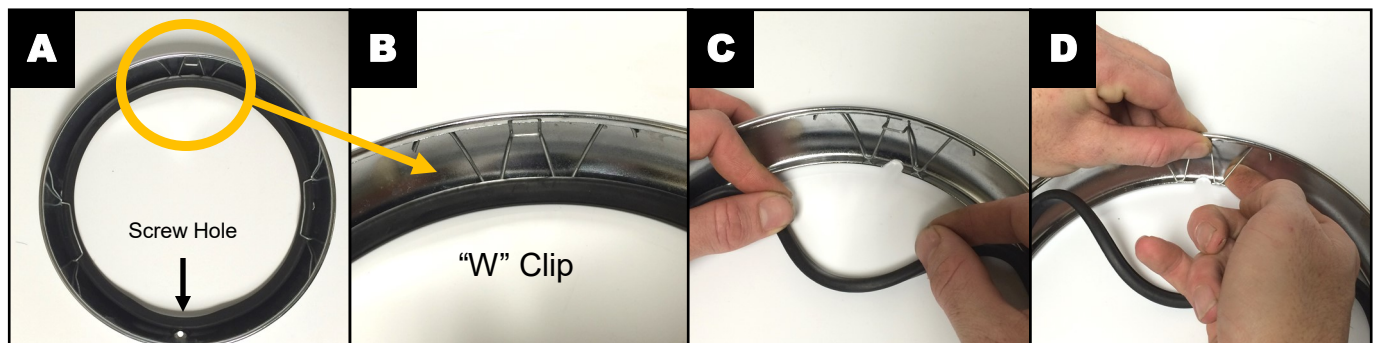
1. Carefully remove all components from the packaging. Take care removing the harness as to not damage the wiring or pull any wires out of the connectors. Un-ravel the wire bundles on the trim ring. Keep in a safe place until ready to install.
2. Consult owners manual for replacing headlamp before beginning. Remove the stock headlamp trim ring from the mounting Assembly.
3. Turn over stock trim ring and locate the "W" clip on the inside. See Figures A & B below.
4. Remove the rubber gasket from the area around the clip, see figure C. Place a thumb over the center square part of the clip & an index finger behind the last leg of the W as shown in photo D. Pull with the right index finger and release the thumb, the clip will come free.

Safety First: Make sure the bike is parked on a level surface and bike's mechanical components are cool to the touch. To prevent electrical shock, disconnect the negative battery terminal from the battery before beginning installation.

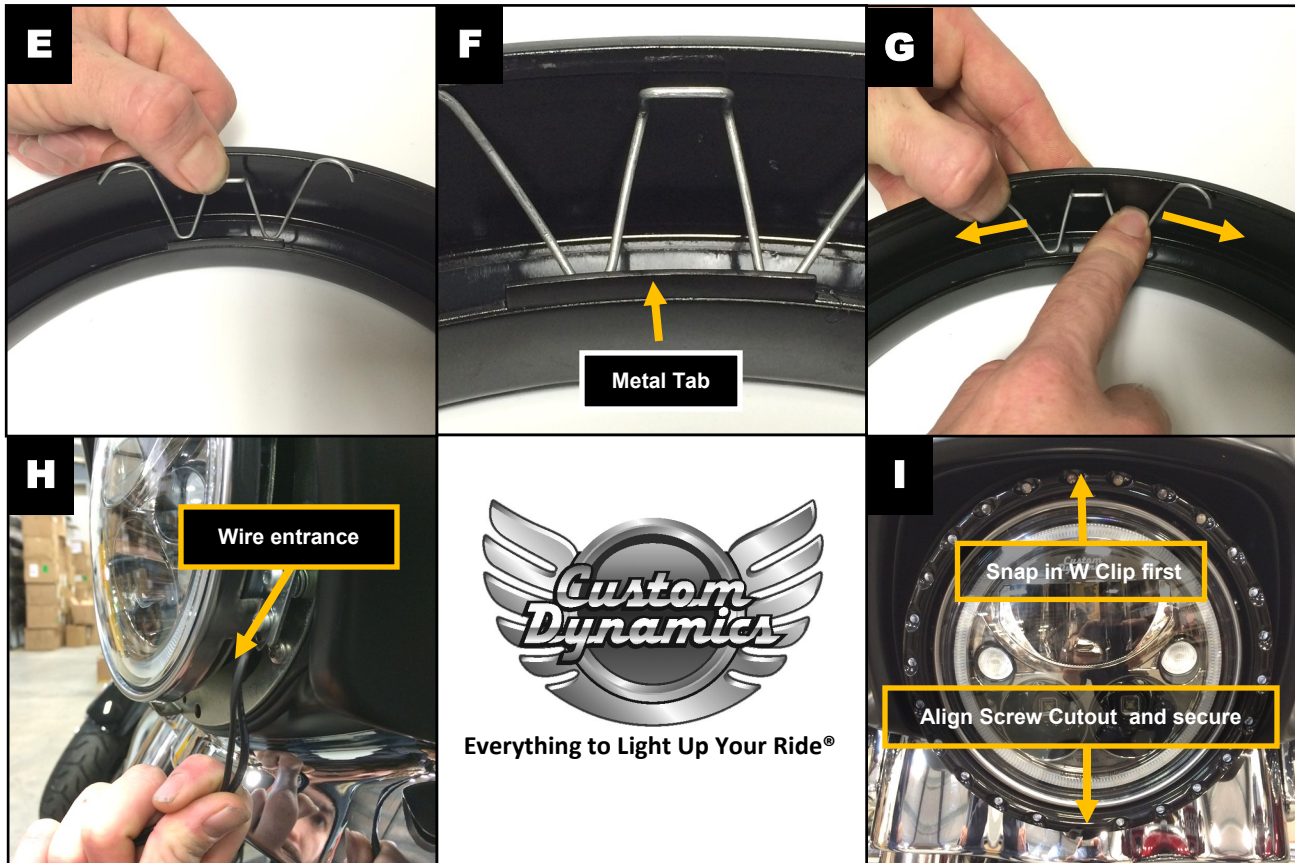
Note: You will have to remove the outer front fairing in order to complete this installation. Please refer to your manufacturer service manual if unsure of this procedure.

Care: Take special care in cleaning the Trim Ring. Never use abrasive polishes or cleaners as these may scratch the finish.

Notice: This product is designed and intended for use as auxiliary lighting on motorcycles only. This product is NOT intended to replace any original equipment lighting installed on the motorcycle and should not be used for that purpose. This product must be wired such that it does not interfere with any original equipment lighting.



Questions? Call us at: 1 (800) 382-1388 M-TH 8:30AM-5:30PM / FR 9:30AM-5:30PM EST

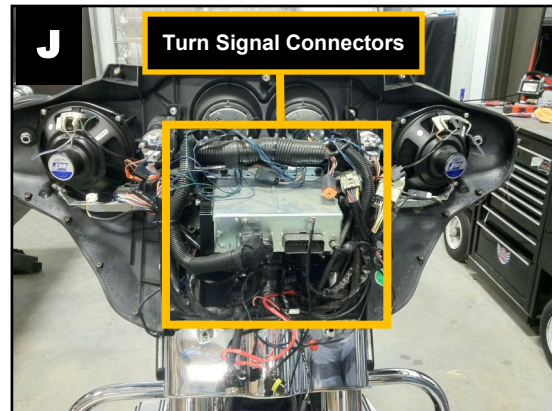


Installation: Trim Ring (continued)

5. Prepare the new trim ring to accept the W Clip. Set on soft, clean surface to avoid harming the finish, face up with the screw hole pointing down to the bottom. Set the W Clip in behind the metal tab at the top, see figures E & F.
6. Hold the clip as shown in figure G and lightly push the end of the W clip arm outward until it snaps behind the lip of the trim ring. Do this for the other side as well. The trim Ring is now prepped for installation.
7. Refer to your models detailed service manual for instructions on removing the Outer front fairing. Once fairing is removed from the bike, set it on a soft clean surface to protect the finish.
8. Take both sets of trim ring wires and feed them through the small opening between the headlamp and the frame as shown in figure H.
9. Grab the wires from the inside of the fairing and pull until there is no slack left on the outside. The wiring is now ready to connect to the provided Connector Harnesses.
10. Mount the trim ring to the headlight assembly. Orient the Screw cutout to the bottom as shown in figure I, then push on the Top of the Trim ring to snap the center arm of the W clip into place on the fairing.
11. Once the trim ring is in place and screw cut out is aligned, use the provided 8/32 X 1 screw to secure the trim ring to the fairing.

Installation: Converter Harness

12. Look for the harness connector on the inner fairing that go to each front turn signals. The connector is located in the area circled in Figure J. You may need a service manual to locate, or trace turn signal wires to the connector.
13. Once the harness connectors are located on the bike, unplug each side and install the provided Converter Harness in line, making sure to plug one side into the fairing harness and the other side into the wire going to the stock turn signals.



Installation: Wiring Connections

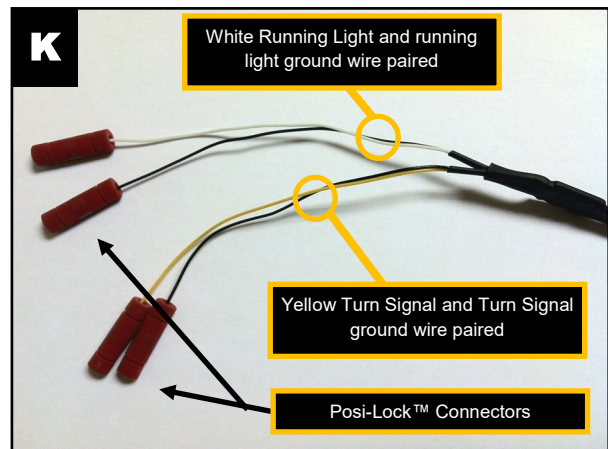
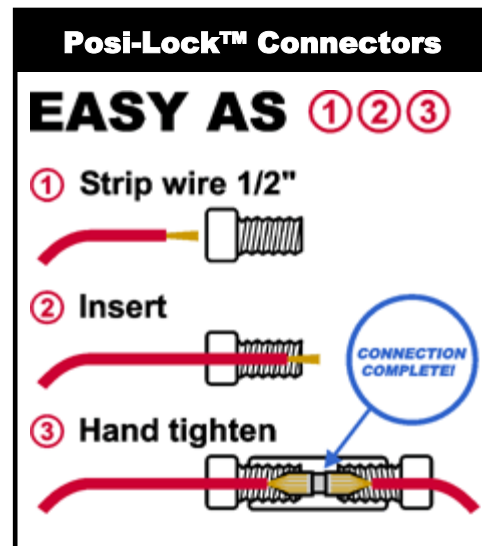
14. Prepare the red Posi-Connectors™ on each wire end by un-screwing the empty end of the connector about half way.
15. Notice the wire pairs on each converter harness, there is a white paired with a black wire and a yellow wire is paired with a black wire. The black wires are the power wires corresponding grounds, they cannot be switched. See figure K for photo.
16. Examine the wires coming from the Trim Ring, the pair of wires with the PURPLE wire in it goes to the left turn converter harness. The pair of wires with the BROWN wire in it goes to the right turn converter harness:

Left Side Trim Ring Wire Pair Colors

- White = Left side White LED Running Light
- Black = Left side Running Ground wire
- Purple = Left side Amber LED Turn Signal
- Black = Left Side Turn Signal Ground wire

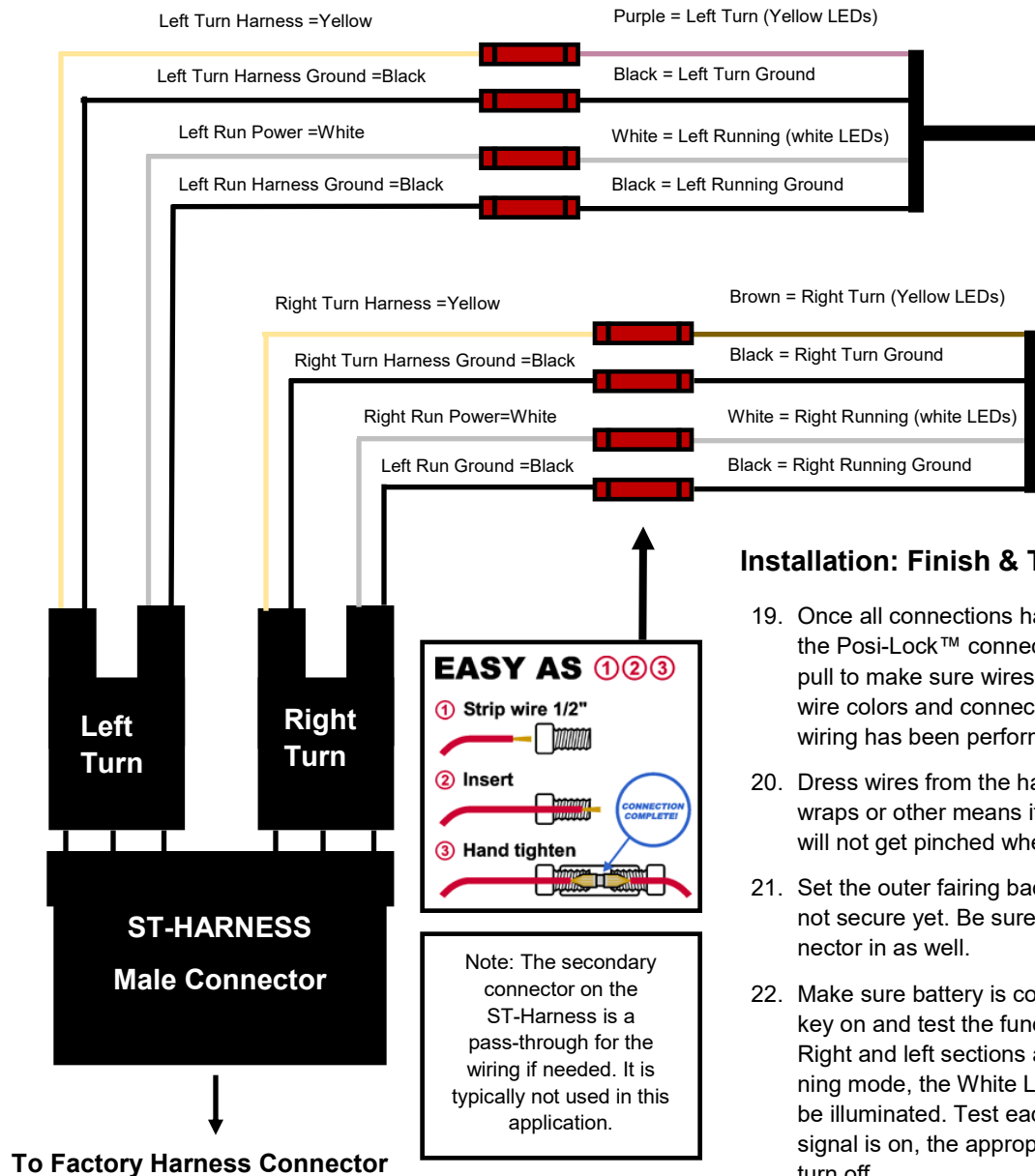
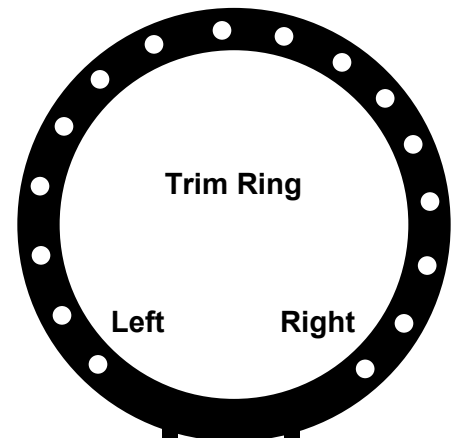
Right Side Trim Ring Wire Pair Colors

- White = Right side White LED Running Light
- Black = Right side Running Ground wire
- Brown = Right side Amber LED Turn Signal
- Black = Right side Turn Signal Ground wire



Installation: Wiring Connections (continued)

17. Having an extra set of hands is helpful for the next steps. The outer fairing will have to rest near the Inner fairing in order to make the wire connections. One person should hold the fairing in place, while the other performs the connections.
18. Using the wiring diagram below, connect the wires from the Trim Ring to the Posi-Lock™ Connectors on each Converter Harness. Make sure that the ground wires stay with their corresponding power wires.



Installation: Finish & Test

19. Once all connections have been made, double check the Posi-Lock™ connectors, give the wires a little pull to make sure wires are secured. Also check the wire colors and connections to make sure the correct wiring has been performed.
20. Dress wires from the harnesses, secure with tie-wraps or other means if necessary. Make sure they will not get pinched when the fairing is secured.
21. Set the outer fairing back in place on the bike, but do not secure yet. Be sure to plug the Headlight connector in as well.
22. Make sure battery is connected, then turn the ignition key on and test the function of the Trim Ring. The Right and left sections are split 50/50. When in Running mode, the White LEDs around the ring should be illuminated. Test each turn signal, when the turn signal is on, the appropriate side's white LEDs will turn off.
23. Secure the Fairing to the bike.